

SERVING CLEOBURY COUNTRY

JULY 2022

THE MEN'S SHED OPENS

It's taken a long time, because it started as a patch of bare land. That was made available thanks to the generosity of the Robinson family. And when it opens its doors it will be a very well laid out and equipped workshop cum meeting place.

The big day is Saturday July 2nd, tomorrow if you like, at 11.00. We are fortunate to have Anna Turner, Lord Lieutenant of the County to perform the ceremony, along with Rector Ashley Buck. The Shed is on the Tenbury Road industrial estate, opposite the Freezer Centre

The amount of work put in by volunteers and generous professionals has been tremendous. Now the drive to recruit members begins and the business of showing those not experienced in using tools and machinery how to do so safely. It will be a place the town can be proud of.

'LETTERS THROUGH TIME'

This is a new play, written by Maria Credali, about the life of Simon Evans, the Cleobury poet. There was an early review of the work at Farlow Village Hall, featuring children from Farlow Primary, word perfect as they worked the story with Maria. Primary school youngsters speaking to an audience, many of whom they would not recognise, was a mighty impressive experience. At the end of the performance, there were very few dry eyes in the hall

An imaginative story of a man who survived the 1914-18 World War, when he was gassed and almost lost a leg. Back here his determination showed as he worked as a postman and developed a writing style that saw him featured on BBC Radio. See and hear on Saturday morning July 16th, at the Festival at the Edge in Hopton Court.

BRUCE WEBSTER

Bruce's passing early in May was no surprise, but what shocked and worried his friends was the lack of a will or funeral arrangements. He had been hurried away to hospital, but no one was sure exactly where. It emerged that he had been taken to Redditch and from there we heard the funeral would be minimal; no more than 12 mourners.

On June 22nd ten people gathered at the Wyre Forest Crematorium, four from Cleobury, six from his home town of Brentwood. Lay preacher Chris Boylan, an old friend, conducted a simple service with great feeling and spoke of the man with affection and knowledge. Roger Castleton then read a tribute before the curtain was closed and we said a silent goodbye. A simple service, but one that generated great warmth for a fine human being.

Are you thinking about Equity Release?

- **Free** Advice
- **No negative equity guarantee**
 - **Pay off** existing debts
- **Help** your family when they need it most
 - **Boost** your retirement fund
 - **Stay** in the home you love
- Access to highly competitive **life insurance** policies
- Qualified **Will Writer** so call me to have your Will written

Call me now to find out more

Equity release will reduce the value of your estate and may effect your entitlement to means-tested benefits.

07966366505 | Stephanie@midasfp.com | www.midasfp.co.uk

Midas Financial Planning Services Ltd is authorised and Regulated by the Financial Conduct Authority



I'm Stephanie

**07966
366505**



Victoria Allen Funeral Services

An Independent Family Business offering a
Personal and Professional Service

Over 25 years' Experience

Competitively Priced

Private Chapel of Rest

Golden Charter Pre-Paid Funeral Plans

Covering All Areas

Home Visits Available

01584 879035

24 Hour Service

8 Charlton Rise, Ludlow, Shropshire, SY8 1ND
www.vallenfuneralsludlow.co.uk
Email: vafs@btinternet.com



The Cleobury Clarion, July 2022

Volume Eighteen - Edition Four



*Millie, a star at the Festival.
See Page 15.*



*Homelands. It's well named.
See Page 29.*



*2,500 kilometres in memory of
dad. See Page 37.*

And On Other Pages....

- 5 - Music for Ukraine
- 7 - The Far Forest Show
- 9 - The Liberal Party in Cleobury
- 11 - Lighting the Beacon
- 13 - Jazz at The Hatch
- 17 - Maisie's Dog Show
- 19 - Jubilee Dining at Doddington
- 21 - Stepping Out! Walking News
- 23 - July in the Wyre Forest
- 25 - Philip Dunne MP
- 27 - A Theatrical Treat
- 31 - Festival At The Edge
- 32/33 - Doddington Lodge
- 39 - Cleobury Mortimer Benefice
- 41 - Simon Morton on Gardening
- 45 - Mrs Grumpy
- 47 - The Social Calendar
- 51 - Prostate Cancer Support
- 53 - The Cleobury Community Hub
- 57 - Let's Beat the Scammers
- 61 - The Town Council Report
- 63 - Local Information



DRY CLEANING & LAUNDRY SERVICE
20 HIGH STREET, CLEOBURY MORTIMER
01299 270571
HOUSEHOLD & COMMERCIAL WORK WELCOME
FULLY ATTENDED, OPEN 7 DAYS

Self Service ~ Full Service Wash/ Dry/ Fold/ Ironing ~ Large Machine for Big Items
Service Washing for Duvets/ Blankets/ Sleeping Bags ~ Team Sports Kit Laundry Service
Equestrian Rug Cleaning ~ Laundry Service for Pet Items
Professional Shirt Service ~ Nikwax Wash & Proof for Outdoor Clothing

.... the place to air your dirty laundry!



RED HARE

45 HIGH STREET
CLEOBURY MORTIMER
WWW.REDHARESALON.CO.UK

01299 270702

YOUR
HAIR
IS
OUR
BEST
ADVERT

PPD FREE - PARABEN FREE - SULPHATE FREE - CRUELTY FREE

“Red Hare now offers a private hairdressing room. Perfect for those wanting more privacy, peace and quiet“



CLEOBURY CHIROPRACTIC

31 High St. Cleobury Mortimer DY14 8DQ

JS James
Smith
OSTEOPATHS

We offer both **CHIROPRACTIC** and **OSTEOPATHY**,
using gentle methods suitable for all ages.
Appointments available outside of normal working hours.
Both practitioners are fully registered, insured & regulated.

Sue Brown
MA MSc DC MMCA
CHIROPRACTOR

- * BACK PAIN * SCIATICA * POSTURAL PROBLEMS
- * JOINT PAIN * HEADACHES (arising from the neck)
- * Some SPORTS INJURIES

- PLUS** * COMPUTER (DSE) WORKSTATION ASSESSMENTS
* BACK CLASS – Weekly exercise class for those with back/neck pain.

Hands for Heroes
Free Chiropractic Care for War Veterans



iO
THE INSTITUTE
of OSTEOPATHY



01299 519351 / 07932 000028 / 07506 287191

www.notjustaboutbackpain.com

www.jsosteopaths.co.uk

GCC registered
General Chiropractic Council
www.gcc-uk.org

 **General Osteopathic Council**
I'M REGISTERED
Registration no. 9254
www.osteopathy.org.uk

CHELMARSH FETE

Saturday July 9th sees the 41st fete at Chelmarsh, which tells you they know how to please the customers. It's a traditional village Fete, with coconut shy, Morris Dancers, pig roast, and lots of stalls – cakes, plants, books, white elephant, tombolas, games of skill, raffle, and more! New this year are a Scarecrow Competition, a Gin Bar, and a Craft Village to showcase local skills and products.

Entertainment throughout the afternoon with ukulele band, dancers, clown and juggler. Excellent home-made teas in the Hall. Free parking and well signposted. Adult admission halved this year, to £1, children under 16 free

At School Lane, Chelmarsh, near Bridgnorth, WV16 6BA
2.00 till 5.00, July 9th.

Further information: website www.chelmarshparishhall.co

[.uk](http://uk) Or Geoff Price 01746 862104

MUSIC FOR UKRAINE

The Support Ukraine concert was organised in St Laurance's church in Ludlow in May, when £5,000 was raised for humanitarian aid.

Older residents of Cleobury will remember David Gaukroger and the tea room he and Alison ran in the front room of their High Street home, with his grand piano the dominant part of the setting. He set Simon Armitage's new war poem 'Resistance' for the occasion and accompanied the soloists, who included Vassily Savenko, who sang the Ukrainian national anthem before their game against Scotland.

David has been voted in as chairman of the Ludlow Liberal Democrats, who once boasted an active membership here in

Cleobury. He was approached by a newcomer to Cleobury, who wanted "to get things moving" so you will find a reminder of early LibDem Days elsewhere in this issue. Maybe interesting times are coming....

WELCOME BACK, NORMAL

A very welcome envelope hit the doormat on June 7th. It was from Sonia Pearsall, notifying us that Doddington Village Hall was open again and that the long running Bingo Nights and Whist Drives would be part of the programme.

Two neatly typed pages of dates, times and events, just the information we need to help compose the Social Calendar. Such a welcome change from some of the messy attempts at design that simply waste the editor's time as he extracts the information from the verbal excess. (End of moan).

SILLY BIT
Never trust an atom - they make everything up.



The Oak Boy
TRADITIONAL OAK FRAMING
SINCE 2011
07398 233443

John Caswell
Johnjocaswell@yahoo.com

SERVICES AVAILABLE

<ul style="list-style-type: none">➤ Flooring➤ Manufacturing & fitting doors & windows➤ Kitchens ➤ Cladding➤ Studwork➤ Bespoke Oak Framing	<ul style="list-style-type: none">➤ Landscaping➤ Patios➤ Brick & Stone work ➤ Roofing, Tiling, Guttering➤ General Building➤ Property Maintenance
--	---

Call now for a Free Quotation!



CM BESPOKE CARE

Q Care Quality
Commission
Registered

S P C
Shropshire Partners In Care

Personal, Nursing and Domestic care.
Tailored to your needs.

Call for a free consultation

Tel: 01746 718816
Mobile: 07943834132

www.cmbcare.co.uk
www.facebook.com/cmbcare
email: cmbbespokecare@btconnect.com



07971 361901 or 01299 832484

Complete Bathroom Installations
Bathroom Refurbishment or Repairs
Wet Rooms
Professional Wall and Floor Tiling



For a quality and guaranteed service, call Stuart for a free quote
Highly Recommended / References available - see my reviews on www.freeindex.co.uk

FOR THE BATHROOM YOU DESERVE!

Flowers By Fiona *est 1991*

Fresh Flowers made to order
Special Occasions
Weddings, Anniversaries, Birthdays
Sympathy Tributes

19a High Street,
Cleobury Mortimer

Tel: 01299 272 995



Phoenix Environmental Ltd.
Contaminated Land Consulting and Contracting

Bringing 17 years of experience to bear, we provide straightforward advice help guide you through planning, or deal with your contaminated land, geotechnical and geo-environmental issues.

Phoenix Environmental offer both site and office-based services including:

- Regulatory Liaison and Planning Approval
- Phase 1 Desk Studies (Geology, Hydrogeology, Hydrology, History)
- Intrusive Investigation (Phase 2) Design and Application
- Trial Pitting, Cable Percussive Boreholes, Dynamic (Window) Sampling
- Flood Risk Advice
- Geotechnical Investigation/Advice, Foundation Advice
- Risk Assessment (GQRA/DQRA)
- Remediation Strategies/ Verification Reporting
- Environmental Audits/Site Audits
- Site Based engineering and supervision
- Drone Surveys/Media Production

We'll be there to guide you through every stage.
www.phoenixenviro.co.uk

Contact us: email. enquiries@phoenixenviro.co.uk Tel. 07800 646691



JOYCE WAKEMAN

At the age of 90 in Worcester Royal Hospital after a short illness, Joyce passed away on May 8th with her family present. She will be sadly missed by her sons David and Andrew, daughter-in-law Sharon and grandchildren Nina and Cassie.

She was born into a farming family at Stottesdon and moved with them to Lower Bransley Farm. After marrying Tom Wakeman she moved to Cleobury Mortimer where she raised her family. A keen and knowledgeable gardener, a member of Cleobury Horticultural Society and for many years the Alpine Garden Society, she created and tended her garden for 55 years, opening it as part of the Cleobury Mortimer garden trail.

With rare and unusual plants the garden is open this year in her memory.

David Wakeman

PIANIST REQUIRED

For the New Notes Singers, a local Community Choir from Cleobury, Tenbury, Clee Hill and surrounding areas.

Meetings on Thursday afternoons from 2.30 to 4.00 in the Community Rooms in Clee

Hill Village are always enjoyable and light-hearted.

If you would like further details contact Barbara on 07801 924035 or email bhall1604@gmail.com

Singers are always very welcome to come along and join in.

FAR FOREST COUNTRY SHOW

How good to see this popular show back and looking very promising. August 13/14th is the weekend and the attractions will include a Vintage Circus, Quack Pac, Zennor's Dancers, Fun Dog Show, Craft Fair, Classic Vehicles, loads of trans for the children, from the Fun Bus to Tractor Rides.

The range of music is amazing, with nine artists or bands due to entertain, including Cleobury Brass. And if gardening is your thing, the horticultural show is always good, with the addition this year of recognised speakers on the Home and Garden Stage to offer tales and tips.

This is one of the best shows in the area and it's just up the road a bit at Far Forest. If you want more information, look in at www.farforestshow.co.uk

CLOWS TOP

GARDENING CLUB

On July 27th we will be visiting Badge Court Garden. This is a Tudor mansion with connections to the Gunpowder Plot. The two and a half acre garden is divided into a series of uniquely different areas and contains specimen trees, over 80 varieties of roses and clematis and much more. Badge Court is near Elmbridge, Droitwich. More details are available from the yellow book or the internet. To book for this trip, contact Elva on 01299 832288. Meet at 6.30pm at the Village Hall to share cars.

Judith Lawson

RHYME TIME

This excellent facility to present stories, rhymes and books to children up to the age of five is back at the library on Love Lane. Vicky Honeybourne is the gentle power behind the revival, with a big attendance at the May relaunch

The next meeting is on Thursday the 14th of this month, from 2.30 to 3.00 and it's all free. You just turn up with Junior and join in. It's part of reviving library based events, with more to come.

TDC CARPENTRY SERVICES

Fully insured qualified professional
Excellent workmanship and quality customer care
From hanging doors, fitting kitchens to bespoke projects

Tim Clare - 07890 519980

Professional. Affordable. Local.



Electrical Installations

No matter the size, we can gladly undertake all Domestic, Commercial and Industrial installations you require.

A family run business, with over 25 years industry experience.

From period properties to agricultural solutions, we provide a professional service every time. We also do call outs and emergency work.

Renewable Energy

Protect yourself from rising energy bills by considering renewable energy.

Solar PV is the most accessible way you can save energy by producing electricity from the sun. Earn a tax free income from the electricity your system produces.

Speak to us about how renewable energy can benefit you or your business.

Whatever your query, give us a call.

T: 07971 096267 / 08450 564173

W: www.awe-services.co.uk

Two Staks, Eagle Lane, Cleobury Mortimer, Worcs. DY14 8RA



THE LIBERAL PARTY IN CLEOBURY - A SHORT HISTORY

Just under 50 years ago (I was a very young man then) inspired by a charismatic parliamentary candidate, Eric Robinson, we formed a branch of the party, made up mostly of people in the professions, small business owners and farmers. Eric established the Liberal party as the natural opposition to the Tories in the constituency but we never came close to taking the seat. We had identified Anne Oldroyd, then the vicar's wife, as a candidate in the 1976 district council elections but our plans were in disarray when her husband, Colin, was offered the post of Rector in Ledbury. I reluctantly agreed to stand in Anne's place but threw myself into campaigning and managed to secure second place in the two seat ward.

Being one of four Liberals on a 40-member council meant that one's impact on policy was limited but I worked hard at communicating with the people of Cleobury, canvassing regularly (not just at election time), delivering Focus leaflets that informed the town and securing small initiatives such

as the collaboration between council and residents that produced the car park area in College Close. I tried as often as possible to welcome new people to the town. One rather grand retiree who had come to live closer to her family said that Cleobury was a lovely town but, "I have never lived so close to council houses before." I think she survived!

I served from 1976 to 1983 and left the town in 1995. One of my few sadnesses was knowing that my dear mother-in-law, Barbara Rowland, who served as secretary of the branch from its inception, died just months before the party's triumph in 2001, when Matthew Green won the seat for the Liberal Democrats.

Campaigning in the 70s and 80s brought a friendly rivalry between ourselves and the conservatives, with South Shropshire a sea of blue and many, though fewer, orange posters. Some houses in the town sported both colours; husband and wife being of different persuasions. Our most embarrassing moment was finding, after a successful Friday night barn dance in the Parish Hall, that one of the lavatories was broken. The following night

was a Conservative Dance, somewhat marred by stewards having to monitor the use of the remaining toilet as men and women had to share it.

David Gaukroger

MET AT THE MARKET



What is it? It's a Wake Up Shower Foamer, hand made by Tegan Haley at Soaperstition.

I bought this from the Soaperstition stall at the Farmers' Market, intrigued by the shape and the careful packaging and labelling it came with. That's one of the strong features at that monthly gathering - the people selling will talk about their products with care and authority.

My Foamer cost me £2.00 and lasted for just two morning showers, but the blend of May Chang and Grapefruit Essential Oil on my skin was invigorating. Well worth £2.00.



The Well Being

Holistic Therapies

Cleobury Mortimer DY14 8AS

www.thewellbeing.co.uk

April Boardman

Reiki Master ITEC MFHT Dip Hyp

Do you have aches & pains, ongoing health issues or just need to relax? Help is at hand!

**Deep Tissue & Remedial Massage
Reiki & Crystal Healing**


Hot Stone Massage-Aromatherapy- Reflexology

Pregnancy Massage & Hypnotherapy

20% off your 1st treatment!

Tel 01299 513148 or 07881494036 or Book Online!

People when thinking of having Home Care often ask who are your staff? What sort of company are they?

TLC are a family run care provider supporting people with Disabilities, Dementia, Aging Population and Acquired Brain Injury to remain living at home for as long as it is safe to do so. Clients when considering home care will often find it difficult to accept and wonder about who are the staff and what qualifications they have? I cannot speak for other companies, however in our company it is made up from many sectors of our society and when these are put together, we have an Outstanding Team. 

One of those sectors are the future NHS professional, we have Daisy who is in her last year of her training to be a midwife, Lucy who is working towards the end of her training to be a Physiotherapist. Christina and Aila about to start their journey into nursing. We have further staff who have just been accepted into the NHS. These lovely kind young adults not only study many hours both in university, on hospital wards, they also give to us and have helped us support our clients for many years! Most joined us while still at college.

TLC have ex-nurses that come to us after raising their family and some, in recent times have re-joined their colleagues in the NHS.

We have staff who have raised their kids and now want a career, TLC will train or retrain people to help people reach their full potential and become one of our Outstanding Team.

We encourage kind caring and honest people of all ages and backgrounds who want to make a difference to people's lives to join our team. TLC invest heavily in people with ongoing support and training to help our new colleagues achieve their goals and reach their full potential. Once initial training is complete and they have been assessed as competent, TLC Induction Manager and our Training Manager will support staff through to achieve their Level 2/3 in H&S Care

Our Training

TLC's Training Team offers full free training on site and support staff through their Care Certificate. We have strong connection with an outside Training Provision who help our staff to achieve their Level 2/3 in H&S Care. Currently we have 32 members of staff that have already achieved Level 2/3 in Health and Social Care. We have qualifications at level 4 and five of our Senior Managers have Level 5. All staff that are new to care are required to achieve Level 2 within the first two years of their employment.

Contact us

For further enquiries please regarding Care or employment please ring TLC Care at Home 01299 272897 for an informal chat. Visit www.tlccareathome.com or wecare@tlc-careathome.co.uk

*Unlock your Potential.
Success starts here!*

COVID-19 Update

All our staff are provided with full PPE's including Gloves, Full Aprons, Sleeves, Visors, Gloves Surgical Masks.

Video training on Donning and Doffing PPE's sent out regularly.

Staff sign health declarations daily, Staff have weekly Covid-19 test. Most of our staff have now been vaccinated against Covid-19. TLC work closely with government regulation and update our risks assessment accordingly.

THE BEACON



Members of the Royal British Legion gather under the beacon's glow after the lighting ceremony. The lighting of the town's beacon at a few minutes after 9.30 drew a crowd to the sports field, where families had been gathering and children playing.

The beacon did look well, with horseshoes used to form the basket and mounted on a steel pole painted silver to match the rest of a good job by Greg Dare and Brett Webster.

Apparently there was some delay because the Town Council wanted the Royal British Legion to watch over the occasion, which was a decent and modest gesture. There was another beacon just a short distance up the Ludlow Road, where John Barnes made

his own loyal gestures to Her Majesty, and we hear that there was a grand affair in Ludlow. A very effective gesture by all concerned and congratulations to all those responsible for the town's ceremony.

MEMORIES OF DODDINGTON

With its smart, new easy to use access path making the climb to the entrance at St John's church much less demanding, support for their invitation to show or record memories was a great success. I looked in on June 5th, when the Yapp family were enjoying tea and cakes after looking through a range of memorabilia.



For me, a copy of the Daily Telegraph reporting the coronation of Her Majesty in June 1953 was the outstanding reminder of her long reign. The pictured very young Charles and Anne simply confirmed the fact.

The whole body of the church was given over to the display of papers, magazines, family and official photos and the minutiae of life over the past 70

years. Recordings made in both recent times and years ago were played on what seemed to be a loop provided another source of information, but at a volume that did not prevent discussion.



It was no surprise that the Gibb family were very much involved, Celia greeting visitors while husband Ewan was back at base printing more leaflets for the visitors. The obvious question to ask was 'What will happen to all these records in the future?'. It's likely that they will be produced in a commemorative booklet, with the originals obviously back with their owners.

This was a clever way to get history out of the cupboards and in a place to be seen. JR

Charlton Interiors

UPHOLSTERY & INTERIORS

Rosemary Jones

Mob: 07837 609229

Phone: 01584 861823

Email: info@charltoninteriors.com

www.charltoninteriors.com

ॐ **BESPOKE YOGA TUITION** ॐ

Relax Breathe Stretch Tone

One to one Yoga lessons

BWY trained teacher with over 15 years experience

Can travel to your home

Angela Kazimierczuk

07870 506655

CLEOBURY MORTIMER PARISH HALL

The largest hall in the area

We are open again so would you like to celebrate an event, party, wedding, or just a get together?

We are able to cater for small or large parties, sit down dinner parties for up to 100 people with or without a bar.

Come and have a look at what we can offer.

To book, call Janet on 01299 271070

'FLICKS IN THE STICKS'

7.30 Saturday July 16th

"THE CONSPIRATOR"

*Mary Surratt - co-conspirator in the assassination of Abraham Lincoln - or innocent victim?
starring Robin Wright, James McAvoy, Tom Wilkinson*

Licensed Bar. Admission £5.00

THE TOWN'S BEST VALUE

Do you know a 2, 3 or 4 year old who would like to join our fantastic nursery?



Ofsted
Outstanding
Provider

Stottesdon Gateway
NURSERY

We really care and make learning fun

We can offer:

- ✓ Nursery places for 2, 3, 4 year olds, available from September 2021
- ✓ From 15 - 30 funded hours available.
- ✓ BEFORE & AFTER SCHOOL & HOLIDAY PROVISION for children aged 2 - 11 years old.

A safe and nurturing learning environment with dedicated and caring staff.
High quality provision with strong links to Reception.
An amazing outdoor area and use of the school facilities and space.

TO BOOK A TOUR :

Stottesdon C of E Primary School

Stottesdon

Shropshire

DY14 8UE

TEL: 01746 718617

Nursery and Wrap-around sessions (term-time)		Fees
Early Start	7:30am - 8:00am	£4.00
Breakfast Club	8:00am - 8:45/9:00am	£4.00
Morning Session	9:00am - 11:30am	£10.00
Lunch club	11:30am - 12:30pm	£4.00
Afternoon Session	12:30am - 3:00pm	£10.00
After School Club	3:00pm - 5:30pm	£10.00

JAZZ AT THE HATCH

I've enthused about Remi Harris's guitar playing on these pages before. But in June I was introduced to another aspect of his considerable talent.

John Hands and Suzanne France love this man's music as much as I do and asked if I'd been to The Hatch, where he plays very personal jazz and blues to a small audience. I'd not heard of the place, but it sounded right up my musical street and in June John and Suzanne collected me and took me down a tortuous set of back lanes through Frith Common to the family farm. You can tell it's the right place by the sign at the entrance; instead of offering eggs at a special price, it's Live Jazz. Yardbird Arts is the name of the business run by Remi and wife Dani.

It's £15 for the evening and you can buy bottles of beer or a wine. The catering didn't run to anything cooked on the night we

called, but a recent bulletin advises that Dani has a new cooker coming and food will be back at their gigs by the time you read this.

The Hatch is a big hut, a shed if you prefer, with tables and chairs set out in cafe style, while at the end is the playing area. You'll gather that this is no formal music venue, you're invited into a family's large music room, where you can chat to the musicians and applaud some great playing skills.

Jazz was the evening's theme and I'll admit I didn't recognise every tune as the trio chimed in, following whoever was leading the piece. Remi is host and so you expect him to dominate, but he's very modest and does not try to hog the limelight. It's jazz in the traditional polite form, each member of the trio playing a solo as they progress through the tune and the other two hesitating and nodding in acknowledgement of what

they've just heard and the audience applauding that section of the performance.

Remi is an outstanding guitarist, able to move from one style to another with consummate ease according to tune. On double bass, Tom Moore completely held his own, not in the usual role of the bass player, but he can take a tune and improvise around it, with his fellow musicians providing accompaniment and joining with the audience in applauding. Nick Dewhurst is described as the trumpet player, but provided drum work, plus trombone and a backing guitar in support of Remi on occasions. One very versatile musician.

I shall go to The Hatch again when I get the chance, simply because it's such a relaxed setting and the music will be to my widely ranging taste. In the meantime, Remi will be playing at a Freddie King Night at Clows Top Victory Hall on the 15th this month.

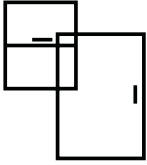


kim stanley
health & Beauty
Est. 1995

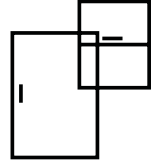
Kim Stanley
30, High Street
Cleobury Mortimer
Shropshire
DY14 8DQ

Tel. 01299 271800
www.kimstanley.co.uk





Ashley Bannister Windows & Doors



- UPVC Windows & Doors
- Composite Doors
- Porches & Conservatories
- Glass Unit Replacement
- Fascia, Soffit & Guttering
- Handles & Letterboxes
- Hinges & Window Restrictors



No Job Too Big or Small
Certass Approved Installer
Local Tradesman Based in Highley

ashban94@hotmail.com
Ash: 07817 785245



Twit - Twoo Falconry

- **Static and flying displays with owls & falcons**
- **Fetes and fayres**
- **3 hour bird experiences based in clows top**
- **Garden parties and birthdays**
- **1-2 hour talks for indoor hall and outdoor visits**



**For quotes and bookings ring Steve Woodison 07738014884 or
Email scw1960@hotmail.co.uk**

MIKE AND SHELLEY ROBERTS

Haulage Contractors

Supplier of Aggregate and Asphalt products

12 Lacon Close, Cleobury Mortimer DY14 8EF

07860 669350

07966 045012

CLEOBURY FESTIVAL

The Weather Gods were not in a good mood on the morning of June 4th. It was overcast, colder than comfortable and not looking good for the town's big open air event. But as the 10.30 opening time approached, there was a steady stream of visitors heading up Love Lane.

The fire engine was a natural for the children, but we didn't hear the siren once - deaf old age or well behaved youngsters?



In the main ring GKY Dance drew a good crowd and much applause as they showed off the discipline that is essential to a good show. The younger girls got great support from proud parents - thoroughly deserved.



The Pembleton Motor Company's four wheeler looks good.

If you mention the car factory in Bayton to newcomers, they look at you as if you've got a screw loose. Not so. This venture by Guy Gregory and father Phil is a small but serious operation with a good reputation. Hand built to order - a rural industry.



Tina Hobin was quite a star in the main ring, performing the belly dance for which she's famous and then leading the spectators in their version, with lots of laughs.

This woman, who is a few years over 21, is quite a nutcase. She was seen at a barbecue at Lakeside, showing a neighbour's child how to roll down a grassy hill. Not quite what you expect from a lady with adult children.

One weakness in the presentation of the Festival was a lack of clear signing on the site. The fact that councillors were greeting arrivals and explaining what was where does suggest a lack of thought, and one A4 size sheet at the Lacon Childe School entrance was simply inadequate. Which was a pity, because there was a lot to see there, like the story telling in what I call the Music Room. Curiosity drew me in

and the way visitors and children were greeted by Andy and the youngsters' attention held was a real eye-opener.



Story teller Andy holding his audience's attention. The young lady listening is Millie, whose photo is on Page 3. She really impressed with her knowledge.



I did like these wooden lantern shades for decorating indoors or out. Jan Jones can tell you more at the Farmers' Market.

It was a good day, with lots to see and enjoy and lessons learned to make future Festivals even better. Well done, all those involved.



Find Your Smile at Cleobury Dental Practice

Whether you're looking for dental implants to replace missing teeth, invisible braces for a straighter smile, boosting your confidence with teeth whitening or a dedicated dentist for your regular care, you can find it all here in the heart of historic Cleobury Mortimer.

- Modern, state of the art facilities and the latest dental technology
- Free car parking adjacent to the practice and step-free access to our dentists' surgeries
- Enjoy private dental care from just 47p per day with our membership plans
- Highly experienced in helping those with dental phobias

Services Provided

- Tooth-Coloured (White) Fillings
- Sedation for Anxious Patients
- Teeth Straightening with Braces and Invisalign
- Dental Implants (Replacement of Missing Teeth)
- Emergency Appointments Slots Available (first come first served)
- Hygienist Services
- Private and NHS Care (NHS subject to capacity)

Opening Hours

Mon, Tue, Wed and Fri **9am-5pm**
Thu **9am-7pm**
Saturdays **by appointment only**

Tel: 01299 271 747

www.cleoburydental.co.uk

BDA Good Practice
Member

 **invisalign**
PROVIDER

CLEOBURY YOUTH PARTNERSHIP

The Festival on June 4th was an opportunity for Youth Groups to work together and bring their activities to the wider public. Our new information leaflets were widely distributed, I took some round the field and thrust them into any group of parents and children with considerable interest prefaced by ' Oh I didn't know about' so hopefully in the next few months our groups will see some return. I have put some spares in both schools and Cleobury Country.

Many thanks to the Scouts for the tables and benches and the Guides for the loan of a tent, especially Garry as chief tent putter up/down. The weather was lovely from 4.30pm!!!

Katherine Garnier the Deputy Lord Lieutenant of Shropshire visited us and was impressed with our range of activities for the area. There are a number of Queens Awards for the Voluntary sector which we need to give serious consideration to as without the volunteers in this area there would be little for our young.

All our Groups are in need of more help at different levels of skills, I realise life currently is pressurised but our youth are our future and deserve our help. Please contact me on 01299 271186 or Madge.shinerton@gmail.com and I will give you the group's contact details which you are interested in or pick up one of our information leaflets which has all the contact details of the individual groups.

The Scouts have invited us to the Scout Hut for our next meeting on Wednesday July 13th at 10 am all are welcome. *Madge Shinerton, Vice Chair Youth Partnership.*

FARLOW AND ORETON DOG SHOW

The remarkable Maisie Harman, who started this show three years ago when she was just nine years old, decided to have another this year. After all, she's now twelve years old, time was slipping by and we were out of lockdown.

It was in the village hall and there were 40 dogs on show. But not Maisie's own, because he tends to bark in canine company. Maisie got the family and other volunteers together to look after the

catering and other dog show matters. At the end of a busy day the takings were counted and the profit was an impressive £1,177, to be divided between the charities Young Lives vs. Cancer and the Midland Air Ambulance.

Maisie and family would like to thank all who helped, came along to visit and the sponsors. And Grannie Fay would like to congratulate this very bright young lady.

FROM THE BANDROOM

A busy June, with fetes and a wedding and now into July, with Pershore Midsummer Brass, a proper banding day out for both players and listeners, one of our favourites.

We will perform at the Ironbridge Brass Festival on July 9th, raising money for the Severn Hospice and always well attended by local bands and a large audience throughout the day.

The last fete of the summer in our calendar will be at Neen Savage on Saturday 16th. We really enjoy playing at these local events.

All the above events are either free or pay on the day – so if you fancy a last minute day out.....*Katie Griffiths*

Firewood

Seasoned logs, barn dried & ready to burn.

Free local delivery -01584 890993 or 07970878224

Various size loads available



Paul Harding Tree Services



John Brazier & Co

Accountants & Business Advisors

Accounts – Company, Partnership and Sole Trader
Tax Returns – Corporation Tax and Personal
VAT - Returns and advice
Payroll Service including RTI

For a personal and
professional service

Contact John Brazier or Sarah Morgan to discuss your requirements on 01299 271473 or email at info@johnbrazierco.co.uk. Alternatively, you can arrange a meeting at 53, High Street, Cleobury Mortimer, Worcestershire DY14 8DQ

01299 271 473



Bumperscuff Rescue

● Body Shop excellence ● Home convenience

Cost effective car body repairs!

● Bumper scuffs ● Paint scratches
● Kerbed alloy wheels ● Small dents

Free no obligation quotes, all work fully guaranteed Call **Andy Taylor** now on **07834 322216** or visit www.bumperscuffrescue.co.uk

CLEOBURY MORTIMER CARPETS

Supplying and Fitting of:-

- Carpets
 - Natural floorings (Cair, Sisal & Seagrass)
 - Vinyls
- Carpets supplied by: Victoria Carpets, Fibre Flooring
& Alternative Flooring at Unbeatable Prices

Contact Details:-

Address: 26 High Street
Cleobury Mortimer •DY14 8BY
Telephone: H: 01299 270095
M: 07739 186163
Email: garethleach@aol.com
or check out our new website
www.cleoburymortimercarpets.co.uk

INFINITE ELECTRICAL SOLUTIONS

For all your electrical needs:

House rewires

Fuse board upgrades

Electric showers

Need an extra socket or light installed?

No job too small

For a FREE quote

Call Lloyd 01584 811184



JUBILEE DINING AT DODDINGTON

The residents of Doddington Heights Park had planned a street party for 80 with picnic boxes delivered to the doors of the 20 or so people who were unable to attend. Bunting was erected along the length of the street and tables and chairs were requisitioned from house to house. It was the first opportunity for many years for everyone to get together and an afternoon of music and entertainment was planned.

When Sunday dawned, cold and grey, Plan B came into operation and the whole event was moved to The Parish Hall. A team of volunteers rehung the bunting and laid the tables with red and blue cloths and union jack flags. It looked a picture!

Entertainment was provided by Dave and Julie from the estate and the whole afternoon was filled with music, laughter and song - and even some dancing!. There were delicious picnic boxes, quiz prizes, raffle prizes and two amazing jubilee cakes baked by Andrea, another of our talented residents. We have to thank Hopton Wafers Parish Council and the site owners Mr and Mrs Lunnon for their generous

donations towards the cost which enabled us to celebrate the 70 wonderful years of Queen Elizabeth's reign in style!
Sylvia Cameron

THE BORDERS CLASSIC BIKE SHOW

Early notice that this popular event will be on Sunday, September 11th, at its long established home in Lacon Childe School. It's run by the Parent Teacher Association, with Tracy Johnson in the chair. Her children will have moved on from Lacon Childe this autumn, so Tracy won't be in charge in future; she's done a great job, taking on something she'd never done before and applying cool common sense.

The Show will be open from 10.00 until 4.00, the halls and playground will be full of bikes from the 1930s to fairly modern and at 1.00 some racing models will be started up. Ear defenders recommended! All proceeds go to providing for the children's education.

A LITTLE MORE FROM THE BANDROOM

Some of you have commented on our Tuesday night rehearsals, as we have the windows to the Parish Hall open. I hope it brings some nice

tunes on the summer evening breeze as we compete with the bell ringers! Cleobury has a bit of everything, doesn't it?

Katie Griffiths

BEWDLEY FESTIVAL

We are happy to report that leaflets detailing the Festival programme will be distributed with this issue at our out-of-town collection points. It will remind you what a range of talent will be appearing at the Festival in October.

BURGLARIES

Sadly, we have to report news of two burglaries in the town in recent weeks, both in the main street. In one instance the front door had been left unlocked, which you just shouldn't do in the 21st century. You could once; I know because I used to leave mine unlocked when shopping, but times have taken a definite turn for the worse in that respect.

One report suggested that the CCTV cameras weren't working. I do hope that's the rumour machine at work and not the truth.

SILLY BIT

**Sign outside a Los Angeles pizza bar:
TODAY'S SPECIAL
ONE PIZZA FOR THE PRICE OF TWO.
YOUR SECOND PIZZA IS FREE!**



Grainger Jones your local financial adviser

Grainger lives in Cleobury Mortimer giving the residents and surrounding areas a dependable financial planning service.

- Wealth Management
- Retirement Planning
- Investments & Savings
- Family & Business Protection

An initial consultation is available at no charge

To book an appointment or just have a chat, please contact Grainger below.

tel: 07974 100089

email: grainger@meridenfp.co.uk

website: www.meridenfp.co.uk



TURNERS GATES

bespoke sizes at standard prices



A small family run business specialising in quality wooden gates to suit all entrances.

Visit our website: www.turnersgates.co.uk

Drop us an email: turnersgates@outlook.com

Or give us a call on: 01299 270 965



Andrew Jordan (Jordy)
JRD.GROUNDWORK@GMAIL.COM

Moors View
Moors Lane, Oreton,
Kidderminster, Worcestershire
DY14 8RH



AVAILABLE SERVICES

- Foundation & footings
- Concreting
- Driveways
- Ditching
- Drainage
- Landscaping
- General Building
- Fencing
- Hedgecutting
- Digger Hire
- All Jobs Undertaken

TIME TO CLEAN YOUR OVEN? LET US DO THE JOB YOU HATE

AS SEEN
ON TV

- Ovens
- Grills
- Extractors
- Filters
- BBQs
- Microwaves
- Hobs
- Ranges
- AGAs

Call or go online today for your free estimate



07913 123543
ovenclean.com



Stepping Out! Who's Walking, When and Where.

ROCK PATHFINDERS

Free guided walks along their local footpaths and bridleways, taking two to three hours off the roads and into the countryside

Thursday July 7th: 10.00am start from Pembroke House, Cross Street, Tenbury Wells. WR15 8EQ

Thursday July 21st: 10.00am start from Droitwich Gateway Car Park, Hanbury Road A4090, Droitwich WR9 7DU

Further details: www.rockpathfinders.uk or Alan on 01299 400304

THE FOOTPATH ASSOCIATION

Last month 20 people enjoyed the Walking for Health trip to Arley. We met at the car park near the footbridge and crossed the River Severn. Following a route up the road out of the village, through an old orchard and a wood until we reached the grounds of the Arboretum. Refreshments were available at the cafe. The return journey took us down hill to the river where the ducks were being fed so were rather vociferous. The next

away day is on July 13th to The Wyre Forest. Please meet at the Love Lane carpark at 9.50am if you wish to join us. There is also a local WfH walk on July 27th starting at 10.00am outside the Market Hall.

Sunday June 5th was the CMFA Parish Walk in celebration of the Platinum Jubilee. Eight people met for the walk based on The Dinmore Dally. Fortunately the heavy overnight rain had stopped but the paths were rather muddy and the crops very wet. Despite the forecast the rain held off and we enjoyed a five mile walk which even included a rather watery view of Clee Hill. The Parish Walk on Sunday July 3rd will start in Milson. Meeting opposite Milson Church where parking is possible.

The work parties are in full swing with clearance work as a high priority. The brambles, nettles and thistles are rampant at this time of year but there is always time to install dog gates and repair rotten stiles. It's amazing how much everyone can help keep the footpaths clear. Just pack some secateurs along with the

water bottles and lunch in the rucksack.

Foxgloves, llamas and Aston Martins were among the sights to be seen on the Social Walk on June 25th. Starting at The Hampstall Inn at Astley Burf near Stourport. The walk also included the remains of a castle and a hidden waterfall. It's amazing the odd combination of sights a walker can experience in this part of the world.

One of my favourite walks around Cleobury is the Rea Valley Amble (Walk 18). Whatever the time of year this walk shows our River Rea at its best. The variety of changing flora and fauna give each season a different appeal. Having recently hopefully recovered from Covid I am very conscious than there are people suffering from long Covid. This nasty virus has afflicted many of us in different ways. Our support is probably the best help we can give. Hopefully time and our beautiful countryside will aid their recovery.

CMFA activities are on our website www.cmfa.co.uk and also on Facebook. *Veronica*



WINDSOR PRICE REPAIR SHOP
Automotive

Email: mikeytwonames@icloud.com
Tel: 07468 521816

Unit 1, Hillocks Farm,
Cleobury Mortimer, DY14 0EB.

 MOT	 Brakes	 Diagnostic
 Services	 Cam Belts	 Exhausts
 Repairs	 Clutches	 Tyres

Mark Pearce

Landscape, Design and Rustic Garden Furniture

- Fencing
- Patios
- Drives
- Decking
- Garden Sheds
- Summer Houses
- Fence Panels
- Log Stores



And Much More

Top Quality Fully Treated Timber Products

Mobile: 07875425028

Tel: 01746718404

Robert Bradley Logs

07794 798616



*Seasoned Firewood, Hardwood,
Softwood or Mixed loads of logs.
Free Local Delivery*



Fresh milk and cream from
Cleobury Mortimer

www.mawleytownfarm.co.uk

01299 270359



SKELLERNS

DOORS & WINDOWS



- UPVC Fascias & Guttering
- UPVC Windows, Doors & Conservatories
- General Home Improvements
- Re-roofing & general building work
- Replacement Glass
- Patio Jet Washing



Free No-Obligation quote. FENSA registered company with years of experience

Call Mike on: 01886 812250 or mobile: 07814 577739

www.skellernsdoorsandwindows.co.uk



When we're halfway through the year it's good to look back and see how it's gone so far. I'm pleased to say that nearly all the natural milestones of the year that I look forward to have arrived successfully.

In May I scanned the grassy verges and found the upright sword leaves of the Lilies of the Valley, followed by their secretive but beautifully-fragrant flowers. The Swallows and House Martins arrived, but maybe in smaller numbers, and none of them chose to nest at our farm. Last month, however, we hosted at least two pairs of Redstarts in our nest boxes, we heard Cuckoos (thank goodness for that!) and the Pearl-bordered Fritillaries flew along the forest rides. I'm not sure all is well but I can only hope that the status of our wildlife can be helped back from 'hanging on' to 'on the road back to full health'.



The Noble Chafer beetle, captured by the lens of Rosemary Winnall.

There's one insect that I've never seen around our orchards but I have evidence that it does live here. Classed as 'rare' for over a century, the Noble Chafer beetle is a big chap

like its distant relative, the Cockchafer or 'May bug'. It is up to 20mm long and an attractive metallic green, so you'd think that I might have noticed it, but the reason it's so seldom seen is not only because it is so rare. Its lifestyle is somewhat peculiar: The female lays her eggs in the mouldering wood of old, decaying fruit trees, where the larvae hatch and feed for two to three years. There they grow, in the almost total darkness of hollow trunks and boughs, leaving behind their droppings or 'frass' like little brown crumbs. Discerning naturalists use teaspoons tied to canes to reach into tree cavities and rummage for the tell-tale frass, and I have witnessed this investigation and the evidence it provides! The exciting part of the Noble Chafer's life comes when the adults emerge in early summer and fly off to feed on umbellifers such as Hogweed and the panicles of Elder or Meadow Sweet. Of course they must also find a mate, and then the lifecycle begins all over again, and the adults die after their four to six weeks of sunshine and love.

The old cherry orchards of the Wyre Forest and its surrounds are becoming fewer and fewer. We've kept our original trees, now about 100 years old, as long as possible, prolonging their lives with regenerative pruning. We've also replanted old cherry varieties in the gaps but in 18 years we haven't had a good cherry harvest, being too slow to beat the pigeons and Mistle Thrushes to the fruit. I suppose it's heartening to know that we're providing habitat for future generations of Noble Chafer, and maybe they'll thank us by letting us see them one day!

Linda Iles

BILL'S QUALITY METALWORK
5 GREENFIELD ROAD, CRAVEN ARMS, SY7 9QU
Manufacturing Made to Measure Gates and Railings
~Balconies and Staircases, Handrails, Carports,
Structural Steelwork and Mobile Welding Service.
Phone Bill on 07973 248 016 or 01588 673 914
Office for a free quote



Heath Farm Meats, Bagginswood

Opening Hours

Wed 8am to 5.30pm, Thurs 8am to 7pm, Fri 8am to 5.30pm, Sat 8am to 12.30pm

Straight from Our Farm to Table

We rear & sell all our own beef, pork, lamb & mutton through our shop on farm. We also make our own flavoured sausages, burgers, home cured bacon, gammon etc. No order to large or small.

Hams ● All Poultry ● Honey ● Mawley Milk & Cream ● Ashley's Cakes & Bread ● Jams ● Eggs ● Cheeses ● Apple Juice ● Potatoes ● Meat Pies ● Sticks & Logs

Telephone 01746 718732 with your order to arrange a date & time for collection



Electrical & Security

Tel: 07973 112463 (Anytime)

01299 489223



- Full/ Part Installations
- Existing System Updates
- Alarm & Security Systems
- PAT Testing
- Domestic and Commercial Properties
- Electrical Problems

- Landlords & Electrical Safety Certification
- Upgrades
- Free Callouts and Quotes
- For Existing and New Installations and Security.

Part P + Full Scope Registration

Card Payments Accepted



Fast Friendly Service, No Job Too Small



FOR ALL YOUR ACCOUNTANCY REQUIREMENTS

www.fairway-accountants.co.uk

Head Office: 01299 822283
team@fairway-net.co.uk

Simon Hector: 07896 439594
sjh@fairway-net.co.uk



Philip Dunne's Letter from Westminster

Sewage pollution

Last month I opened a Backbench Business debate in the House of Commons on the government's Strategic Policy Statement to Ofwat.

Despite the dry title, this is an incredibly important issue for all of us who care about the ecological health of our rivers and waterways – as the Strategic Policy Statement is the primary mechanism through which the Government influence the water regulator, Ofwat, to refocus priorities for capital expenditure by the water companies in England for the next five-year pricing period, from 2025 to 2029.

Since privatisation, Ofwat's remit has focussed mostly on ensuring supply of quality drinking water while keeping down household bills, with much less regard to investment in water quality. But given Ofwat's unique position as the economic regulator, its approval is required for all capital investment. So I have been pushing for Ofwat's focus to be not only on household bills and water supply, but also on the environmental impact that water companies have.

With the rising cost of living, none of us wishes to see bills rising sharply, but equally, if water rates are set so low as to preclude necessary capital investment in water treatment, we will simply kick the can down the road for another five years and the problem of sewage discharges into our rivers will be harder to solve and more expensive to fix. It is clear from both public campaigning and surveys undertaken by water companies themselves that consumers rightly really care about protecting the health of our rivers.

There is also a great deal of political consensus behind this issue. Since launching my Private Members Bill to clean up our rivers over two years ago, I have worked with politicians from all sides of the House of Commons to garner support for change. That

being said, I had to call out recently some attempts to use this issue for party political posturing ahead of local elections – this issue is too important to disrupt the overwhelming consensus we have created by campaigning on a cross party basis.

In fairness to water companies, there is no quick fix for six decades of underinvestment in water infrastructure – despite the posturing some party political campaigners continue to make. Water companies are also not solely responsible. For example, when new houses are built, developers do not have to pay towards the cost of water and waste water infrastructure. Agricultural runoff is also a significant issue.

Even when water companies do come up with plans to improve sewerage, it takes years to build significant new infrastructure, even after completing lengthy planning processes.

Last month I visited the largest water treatment infrastructure project in the UK – the Tideway Tunnel project – 25km of new sewers under London, which will remove almost 40 million tonnes of sewage currently discharged legally each year into the Thames. This transformative project is being delivered at a cost of only around £20 per annum per household. But it illustrates well both the high cost, £4.9billion, and the length of time involved in delivering a transformational project to improve water quality - 11 years from securing planning to becoming operational.

So a long term solution for whole river catchments requires long term campaigning, and I shall be keeping up the pressure. Later this month I am hosting a public meeting in Ludlow with Severn Trent Water about efforts to clean up the River Teme from Knighton to Ludlow, where real local progress is underway.

Philip Dunne

Do you suffer from heat loss, outside noise or draughty windows like many older properties?

**Bespoke
Secondary
Glazing**

Secondary glazing from Lansec greatly reduces draughts and heat loss while retaining the traditional appearance of your original windows

- **Recommended** by Historic England for heritage and Grade 2 listed buildings
- **Barely visible** from inside or outside
- **Colour matched** to your existing windows
- **10 year** material and labour guarantee
- **Local**, family run business



01299 544013
lansecglz.co.uk

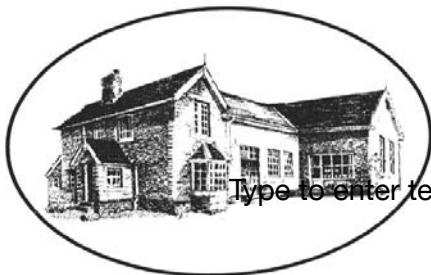
Unit 4 Blackmanstitch, Long Bank, Bewdley, Worcs DY12 2QW



LANSEC

Bayton Church of England Primary School

- Be the best you can be, as a child of God -



Type to enter text

www.baytonceprimary.co.uk
01299 832393
office@baytonpri.worcs.sch.uk

Call or email to book an appointment to visit our school and meet our staff.

"We offer an alternative and unique Primary School experience, in an idyllic rural setting. A small family-orientated school with a caring ethos and traditional values, coupled with excellent results. If you want the very best for your child, come and visit us."

*Ms. Jolanda Simmonds
Head Teacher*

**Spaces currently in Years 4, 5 & 6, and we are also welcoming Parents & Carers of September 2019 intake.
Governor vacancies – please call for information**

Rated "Outstanding" in our latest SIAMs inspection (March 2018).

Friendship – Hope – Perseverance – Compassion – Trust – Forgiveness – Responsibility – Respect – Truthfulness

Our school vision: We aim for everyone to be a part of our community, be life-long learners who are confident, enthusiastic, valued and reach their God given full potential.



CLEOBURY W.I.

We were happy to welcome Liz Smurthwaite to our June meeting, our ex-treasurer, longstanding member of WI and an accomplished artist. She displayed examples of her drawings and guided us through the different stages of pencil drawing. Although the session was about drawing the leaves we'd been asked to bring, few appreciated how much fine detail would be required. The meeting was well attended and there were moments when the room was unusually quiet as everyone focused on the task in hand!

Fran kindly talked about the Shropshire Federation AGM that she attended and how interesting the experience had been. After the singing of Jerusalem, there were speeches, the presentation of our Centenary Birthday Certificate and a decent lunch.

Judy thanked members who helped on the stand at the Cleobury Festival. Special thanks go to Clare for putting together a wonderful display of memorabilia from the time of the Queen's coronation to date. This attracted a lot of interest.

Projects for our centenary are on-going. Squares members

have been sewing are almost ready to be assembled into a celebratory tablecloth. The garden outside church has flowers emerging.

Organisers of the Men's Shed have expressed gratitude for our contribution from fundraising and have invited us to attend their official opening on July 2nd.

Details of other visits and events will be included in the next copy of the Clarion.

For further information contact Clare 01299 271905 or Judy 01299 270983 or email judysant10@gmail.com

Val Sniadowski

A THEATRICAL TREAT

Yazmina Reza's play "Art" debuted 30 years ago, but remains a favourite with both actors and audiences. A headliner at London's West End for no less than eight years, it attracted Albert Finney, Tom Courtenay and Ken Stott. It ran for 600 performances on Broadway and won a Tony award for Best New Play. It is frequently in critics' lists of Best 100 Plays of All Time.

Now the Ludlow based Here to There Productions are bringing this very special play

to West Midlands audiences with an eight-show run at two separate theatres - Bromyard's Conquest Theatre and Ludlow's Assembly Rooms.

At Bromyard it's booked for July 20th to 23rd, starting at 7.30 every evening. Box office is 01885 488575 or www.Conquest-Theatre.co.uk It then moves on to Ludlow for a July 27th to 30th run. Box office 01584 878141 or www.LudlowAssemblyRooms.co.uk

For more information, visit www.Facebook.com/HereToThereProductions or email rachel@HeroPR.com

THIS IS CLEOBURY MORTIMER!

Checking the location of new properties in the town before joining the Wine Walk, it struck me how very inaccurate some of the addresses estate agents offer can be. Some are downright daft, like Catherton Road, Kidderminster. No it's not!

The agents could do themselves some good by making it clear properties they say are in Kddy are in fact here in Cleobury. I suspect some sales are lost because people are put off - where would you rather move to?

No.19
The Beauty Room
with Jane Weaver


Wash away the aches, pains and stress of everyday life by indulging in a relaxing Swedish massage, any combination of back, shoulder, neck, arms and legs, ½, ¾, 1 or 1½ hrs, or treat yourself to a manicure/pedicure, waxing or tinting.

Telephone consultations available to discuss any personal requirements, treatments available at No.19 or in your own home.
Contact Jane on 07968 582269 or email 19thebeautyroom@gmail.com

Just like the lotus flower we too have the ability to rise from the mud, bloom out of the darkness and radiate into the world!



Soft furnishing and
Interior Design Services


Masquerade
Fabrics Limited

01299 271 680
36 High Street Cleobury Mortimer near Kidderminster
Worcestershire DY14 8DQ

Retailers for Sanderson, Harlequin, Monkwel
Crowson and many more...

Comprehensive design, measuring and fitting service.



The Lamp Restaurant

15a High Street, Cleobury Mortimer, Shropshire, DY14 8DG

01299 272785 or 01299 271313

Fully Licenced and Air Conditioned

Serving Bangladeshi & Indian Cuisine



The Lamp Restaurant winner of Currylife award chef of the Year

Open 7 days a week from 6.00pm until 11.00pm

The Lamp's cuisine, inspired by Sylhet, the second city of Bangladesh, offers a wide variety of choice along with established favourite dishes and a selection of Chef's Specials.

The wide variety of starters and accompaniments chosen by our chef to complement your main course.

Takeaway service offers free delivery up to 3 miles for orders over £15.00.

Find us on Facebook: Lamp Inn Cleobury Mortimer



Michael Coombes Roofing & Building Maintenance.

Complete Re-roofing, Roof repairs, Pointing & Chimney repairs.

Slabbing & Brick work

Wall & Floor Tiling

Painting & Decorating

Over 20 Years experience in the Cleobury area.

Call Michael on 07854 047413

APSupplies

- ◆ Specialists in equestrian and field maintenance
- ◆ Haylage, hay and straw supplied
- ◆ From chain harrowing to mowing and baling
- ◆ Fencing to ménage maintenance
- ◆ Woodland management and coppicing
- ◆ Concrete pads and sheds all at competitive rates

APSupplies.....Call today for a chat !



Ant Harman: 07779239393

Homelands Residential Park. A special place in the quiet village of Chorley.

Homelands Residential Park is the most welcoming residential park I've visited. You drive in through a wooded entrance and the immediate impression is of cleanliness and colourful order. Forget the potholes you hope you've dodged on the way here through Shropshire's road mess, this place is maintained with plain hard work and pride.

The park currently occupies 17 acres, part of the 100 or so acres that have been in the Home family's ownership for 100 years or so. Nobody seems to count such figures here, it's the Home family's place and has been as long as anyone can remember. There's an aerial photo of the place long ago, when it was simply a caravan park, but it's moved on with the times and is a lot more now.



The first person to greet you in reception is Claire, one of the family and blessed with a winning smile as well as deep knowledge about the facilities available to those who decide to buy one of the very smart homes and opt for a quiet and relaxed life style. Sales are restricted to the Over 50s, to

ensure peace and quiet and the home you buy is just that - your home. None of this having to move out for one month in the year, you are the home owner, full stop!

So what is there beyond these clean streets and smart homes, Claire? "We've got a fishing pool, allotments and 74 acres of woodland where you can walk the footpaths. We can accommodate equestrian interests too." They've picked up on the idea of the Men's Shed here in Cleobury (the Clarion is a favourite read) and are looking into the possibility of just such a shed on site. The message is that they are very approachable and willing to listen.

The homes come from two highly regarded manufacturers and prospective customers can visit their factories and see them being made as well as viewing all the options on offer. To show how flexible this service is, one couple moving to the UK selected their home and the specification and location. without actually visiting the park. They arrived about the time the home was delivered and lived in a caravan provided on site before moving in. And they are still here.

It's amazing how far afield their residents comes from, thanks to the interest via the website : www.homelandschorley.co.uk They have people living here who've come from New Zealand, Australia, Europe and Cyprus. It's a truly international operation.

Sizes of homes range from compact to damned nearly huge - the biggest available is

48 feet long x 20 feet wide, all delivered in 10 feet wide sections by truck. Getting a place that size through narrow Shropshire lanes is no minor challenge, but they do it. And if you get to walk around, you can see some of these big places sitting on a hillside site with a view across the farmland.



The place has come through the trials of Covid and Lockdown in one piece, the obvious advantage of a family business run by the family. The only employed person on site is Claire, a family member. And they are very busy, clearing sites for homes currently reserved until May 2023. From that date they will have a park residential home available for potential customers to come and stay on site to see if it's what they really want to commit to.

And they bring business to Chorley, like Claire visiting The Duck Inn for Sunday lunch and finding four park residents eating and nine others had called and collected a takeaway.

It's a great story about a family just getting it right and getting on with it. If you want to know more, call 01746 718145

festival at the edge



15-17 July 2022

Hopton Court, Cleobury Mortimer,
Kidderminster DY14 0EF

Join us for superb storytelling, music,
workshops, and much more, in beautiful
South Shropshire

Artists appearing include:

BouZatina, Jim Causley,
Peter Chand, Kate Corkery,
Maria Credali, Keith Donnelly,
Pauline Down, Nick Hart,
Andy Harrop Smith,
Michael Harvey, Cath Little,
Hugh Lupton, Jack Lynch,
Sarah McQuaid, Jumana Moon,
Jess Morgan, Abdullah Mufa,
Rachel Murray, Belinda O'Hooley,
Panic Family Circus, Gauri Raje,
Raphael Rodan, Erik Sjøholm,
Dovie Thomason, Liz Weir,
with more to be announced.

Weekend and day tickets
available, please see our
website for details.



taking storytelling to the edge

"Amazing music, wonderful activities, excellent!"

"Lovely atmosphere, beautiful landscape."

"Great festival... there's nothing quite like it!"

For more information:

email: info@festivalattheedge.org

www.festivalattheedge.org

tel: 07544 044 126



Supported using public funding by
**ARTS COUNCIL
ENGLAND**

**THE FESTIVAL AT THE EDGE
WITH
AN INTERNATIONAL
STORYTELLING FESTIVAL**

"No matter what our age, we never forget a great story."

Now in its 29th year, this delightful festival takes place at Hopton Court from July 15th to the 17th.

Festival at the Edge is a weekend event unique in the festival calendar as it brings together the finest storytellers from near and far, combined with the best established and emerging talents from the folk music world. It is a perfect antidote to the hustle and bustle of everyday life, and there are stories for all tastes and ages, whether you are into epic tales, ghost stories, local legends, or tales of wit and wisdom from around the world.

This year's exciting programme includes the wonderful Storyteller Dovie Thomason from America, who has Lakota, Plains Apache and Scot Traveller ancestry, Gauri Raje who lives in Scotland and hails from India sharing beautiful and evocative stories, the wonderful Michael Harvey from Wales, who will be sharing the classic Taliesin, the story of the Celtic world's greatest bard, accompanied by the renowned singer and musician Pauline Down, plus many more great storytellers from near and far.

A hearty feast of live music this year will include amongst others; the hugely popular Belinda O'Hooley (who co-wrote and sang the theme tune to the BBC's Gentleman Jack, with Heidi Tidow), the very talented writer and musician Jess Morgan from Norwich, multi-award winning singer, songwriter, musician and proud Devonian Jim Causley, and the multi-talented Nick Hart whose work with the English folk song is rapidly gaining him a reputation as one of the most acclaimed artists of his generation.

The festival prides itself on being a family friendly event and offers an exciting children's programme for all ages in a variety of venues, providing tales, workshops, bedtime stories, and all-day activities in the Big Top Tent with festival regulars Panic Family Circus where children can learn amazing circus skills over the weekend.

Ticket Options include full weekend and daily tickets, with camping onsite as an added option. For a memorable weekend in spectacular surroundings, get yourself to the Festival at the

Edge where your imagination is guaranteed to soar.

"It's one of the highlights of the year, my favourite festival".

"Definitely the friendliest festival going, and with such a wonderful fellowship of tale tellers".

"A beautiful festival-never fails to inspire me".

Web- www.festivalattheedge.org

Email- info@festivalattheedge.org

Peter Chand

AND SIMON EVANS

REMEMBERED

"An ordinary man with an extraordinary story."

Storyteller Maria Credall explains:

Like many thousands of others in World War 1, Simon was badly wounded both physically and mentally. But he was a man of optimism and drive and he managed to persuade the surgeons not to amputate his badly shot leg, and worked hard to recover from the gassing he had suffered. His story is one of hope. We follow Simon from the busy, noisy post war city of Birkenhead to the quiet restorative calm of the countryside around Cleobury Mortimer. He wrote a great deal about the positive effect the countryside had upon his physical and mental health in his five books and numerous published articles, but the story we tell will also touch upon the very personal struggle of a man coming to terms with life after conflict.

Working with the children and staff at Farlow CE School has been an absolute joy. Our performance was created collaboratively and the children have excelled themselves. They have learned how to remember and share traditional tales, shaping the stories, reaching the audiences and creating a show full of poignancy and laughter. Our story of Simon's life is woven together with traditional tales from all over the world and their messages of hope is just as relevant for audiences today as for those who sat by the fire listening to these same stories hundreds of years ago. We very much hope that our performance will entertain, inform and delight the people of Cleobury Mortimer and the area - after all, Simon Evans was their postman.

"Letters Through Time" will premier on the Saturday morning at Festival at the Edge storytelling festival which takes place on 15th -17th July at Hopton Court. Storytellers and musicians from across the globe will be performing at the event. *Maria Credall*



Remember to follow us

Doddington Lodge Post

THE SEASIDE COMES TO DODDINGTON



Summer has finally arrived and we're soaking it up here at Doddington Lodge! Everyone is extremely pleased that we are now at the start of the summer months. Longer days, more sunshine and lots of fun activities to take part in the lovely gardens.

To kick summer off to a fun and happy start, we all had an absolutely brilliant day at the Doddington Lodge beach party. Everyone felt so lucky to have such amazing weather whilst enjoying a nostalgic throwback with the knotted handkerchiefs, fish & chips in newspaper, candy floss, ice creams, sing-a-longs and as you can see, lots of laughter.

Now that we are all feeling extremely summery, we are even more excited for the Doddington Lodge summer fair, which we have started to prepare! It's going to be a summer to remember!



Join our team

and make a real difference...

Becoming part of the Doddington Lodge family is really something special. Our team is built on a shared purpose, to provide outstanding care for our residents and support for loved ones. We invest in our team members, helping them progress and develop within their roles and career path. More than ever we are looking for the right individuals who can really make a difference. If you believe you have the right skills please email your CV to: enquiries@doddingtonlodge.com or visit www.doddingtonlodge.co.uk/careers.

Current Vacancies

- FULL & PART TIME SENIOR CARERS
- CARE ASSISTANTS
- NIGHT CARERS

To apply please send your CV to enquiries@doddingtonlodge.com



Remember to follow us

DODDINGTON LODGE VILLAGE COUNTRY FAIR Saturday 23rd July 2022

CALLING ALL ENTRIES!

This year at the Doddington Lodge Village Country Fair on Saturday 23rd July 2022, we have decided to do things a little differently... Don't worry, there will still be the delicious treats, raffle, food & drink, entertainment and stalls with lots of different goodies, but this Summer, we are giving you all a chance to get creative and have some fun!...

Our 'BEST IN CLASS' categories are as follows:

1. The best homemade bakes & cakes (adult category and child category)
2. The best home-grown vegetable (open to all)
3. Design a miniature garden (child category only)
4. The best flower arrangement (open to all)
5. The best crocheted/knitted granny square (open to all)



We are so excited to announce that entries are now open!
We kindly ask that all entries are amateurs, and that you have fun getting creative with your entry!

To enter, please send a email to reception@doddingtonlodge.com with your name and category/categories you are taking part in. It is going to be an absolutely wonderful occasion.

Doddington Lodge, Doddington, Nr Cleobury Mortimer, Shropshire, DY14 0HJ.
www.doddingtonlodge.com | E: enquiries@doddingtonlodge.com | T: 01584 707084

CARTER'S ANTIQUES



We are looking to purchase all manner of antiques, jewellery, coins, medals and curiosities.

For a free valuations kindly telephone
John Carter: 07779 311792
 Or email: johnbarney743@gmail.com

SINGING LESSONS

Professional singer and experienced teacher recently moved to this area
 Vacancies available

All styles, ages, standards welcome
 Contact Angela Kazimierczuk on
 07870 506655



Natalie Taylor Dip CFHP MPS Pract.

Specialist Foot Health Practitioner

Specialising in:-

- In-growing toenails
- Fungal infections
- Nail trimming
- Verrucae
- Calluses
- Corns

All from the comfort of your own home.

If you would like to make an appointment, please call on **07779 113982** or **01584 890112**



COUNTRY SKILLS

CPCS/NPTC Approved—fully insured

- Outside Renovation
- Tree Surgery, Hard Landscaping
- Slabbing and Fencing
- Decking, Roofing
- Contract Mowing

Call for a free quotation

R. Price & Sons

Mobile: 07967 140720 Email: roger@country-skills.co.uk

Painter/Decorator Christine Smith

Friendly, local, female professional. Any job considered: including Indoor/outdoor, walls, windows and doors, wallpaper & preparation. DBS checked. Fairly priced. Free quotes.

Call: 07977296335

E: clsartcontact@gmail.com



Precious Memories

Funeral Celebrant - Carole Clayton

07971 543790— 07942 774560

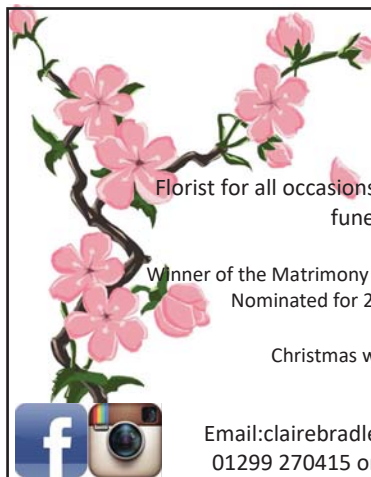
South Shropshire—North Herefordshire—North Worcestershire

Celebrant@hoskingsfuneralsdirect.co.uk

www.hoskingsfuneralsdirect.co.uk/celebrant

FB: @preciousmemoriescelebrant

Everyone has a story to tell—I'd be honoured to be the one to tell the story of your Loved One.



Claire Bradley
Floral Designs

Florist for all occasions, specialising in wedding and funeral flowers

Winner of the Matrimony Award 2020 Best Wedding Florist
 Nominated for 2021 Matrimony Awards

Christmas workshops available



Email: clairebradley1@icloud.com
 01299 270415 or 07980 580770



Domestic oil-fired boiler breakdown & maintenance services.

27 years' field-service experience with leading UK boiler manufacturer Worcester Bosch.

Donovan Taylor

Tel: 01299 828670 or 07807 837040

donovan.taylor@sky.com

www.greenstar-boiler-repairs.com

Caring about your environment and providing an honest, professional & reliable service you can trust



A small local business.

I am a qualified lawyer with over 30 years experience offering a personal and approachable service.

I undertake specialist will drafting, lasting powers of attorney, deputyship applications and probate.

"I've used Mandy at Westons Wills and Probate numerous times over recent years covering all aspects of her expertise. Her guidance on the way forward and solutions to issues that she has suggested has been excellent. She is extremely communicative and responsive, and handles difficult situations with compassion and empathy. I have happily and confidently recommended her services to everyone I know that would benefit from her services."

"Mandy Weston of Westons Wills and Probate is a very professional and knowledgeable person. She has now become my 'go to' legal adviser and has taken on many legal tasks for me and my family. Wills, Probate, Inheritance Tax and Powers of Attorney. I trust her judgement and experience to act in mine and my family's best interest. I would highly recommend her legal services to anyone."



Contact me today

"Great expertise and a friendly professional manner"



Contact Mandy Weston Phone 01299 405873 Mobile 07931 411733

Email mandy@westonswillsandprobate.co.uk **Website** www.westonswillsandprobate.co.uk

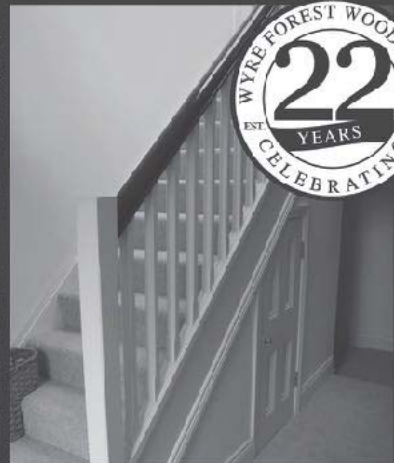
Address The Old Snuff Mill Warehouse, Park Lane, Bewdley, Worcestershire DY12 2EL



**WYRE FOREST
WOODCRAFT**
purpose made joinery

**Specialists in the Manufacture
of Purpose Made Joinery**

- Tailor Made Timber Windows
- Traditional and Contemporary Style Timber Doors
- Custom Made Staircases
- Bespoke Conservatories
- Made to Measure Gates




TO SEE EXAMPLES OF OUR FULLY FACTORY FINISHED JOINERY VISIT OUR WORKSHOPS AND SHOWROOM

www.wyreforestwoodcraft.co.uk

01562 68100 | enquiry@wyreforestwoodcraft.co.uk

Oldington Lane | Firs Ind Est | Kidderminster | Worcestershire | DY11 7QN

IRENA S.A.C DIP. (DIST). N.C.F.E. M.C.F.H.P.
FOOT HEALTH CARE PRACTITIONER




All your foot problems dealt with:-

- Foot health check • Verrucas etc.
- Corns • Medical Manicure
- Callus • Medical Pedicure

Free vascular Doppler Check of your feet

The Old Farmhouse
Button Bridge, nr Bewdley
DY12 3AW



Mobile visits available
01299 841 277
hessins@gmail.com

Paul Harding  **Tree Services**

- Tree surgery and felling
- Woodland thinning & maintenance
- Hedge trimming & grass cutting
- Supplier of hardwood logs, kindling and garden bark

•NPTC certified fully insured. Domestic and commercial work undertaken.
Tel 01584 890 993 Mob 07970 878 224

Hollywaste Holiday Lets

Our 2 bedroom (ensuite) cottage, sleeps up to 6 adults, situated in Hollywaste, Cleobury Mortimer. Fully equipped kitchen, open plan living room with log burner, dining area and downstairs WC. Includes Freesat and fast WiFi. There are enclosed & open decking areas outside, to take advantage of the beautiful countryside views, and a grassed area for outdoor games. Open all year round and welcomes adults, children, 1 large dog or up to 2 small dogs

Discount of 10% available for locals simply quote "keepitlocal" at the checkout

Events we can accommodate:
Staycations, Pamper weekends, Shooting weekends, Wedding venue, Minimoon stays, Stargazing weekends, Cookery weekends & events, Camping and caravan pitches are also available!
If you're interested in hiring our space or land for any event and time frame.

Tel: 07962 151322 Email: hollywasteholidaylets@gmail.com FB: <https://www.facebook.com/HollywasteHolidayCottage>
Website: <https://hollywasteholidaylets.squarespace.com> for more information

 **Kingfisher Crafts**
Sally Serrell-Cooke
07890 721657 | kingfishercrafts299@gmail.com
Visit me on Etsy and Instagram: **KingfisherCrafts299**



New Baby Hampers (Travel Changing Mat, Bibs, Nursing Towels, Quillow) *
Placemat Sets * Wine Gift Bags *
Cafetiere Jackets * Festive Gifts

THE 2,500 KILOMETRE CYCLE RIDE



Milly Pain and Christian Thomsen, two heroic cyclists with a big ambition.

Milly Pain and Christian Thomsen are on their way to Italy, by bicycle. They left Cleobury on June 4th and are headed for Penne in the middle of Italy. That's where they had their last holiday with Milly's dad, Graham Pain, who was lost to a combination of cancers last year.

Their aim, as they pedal through eight countries, climbing an estimated 21,000 metres along the way, is to raise funds for the Guts UK charity, the only UK charity funding research into digestive diseases which affect the gut, liver and pancreas. That was the cause of Graham's death, so you can understand the drive behind the journey. Guts UK also work with with the Less Survivable Cancers Taskforce.

We heard from them on June 18th, when they were half way through the journey and approaching the Alps - that's a huge natural barrier to tackle on a bicycle, but their efforts had raised £6,000 at that stage and their target of £10,000 looks attainable. They've been covering about 100 km a day, in 30 degrees of heat and Milly's comment is "Amazing and fulfilling at the same time."

They have Instagram and Facebook pages under the title @thecharitycouple - pedallingtopasta and there's naturally a justgiving page to offer support

and encouragement in this giant task: www.justgiving.com/fundraising/pedallingtopasta.

It's difficult to imagine a more worthy cause than this.

THE WINE WALK

This gentle social evening has become part of the social furniture of the town. Introduced to us by Heather Kippin, it was her experience of such an event in Hampshire that inspired her to suggest it as a fund raiser for the Friends of Saint Mary's Church. Only Covid and its nasty threats could stop the Walk occurring, but this year it was back and the weather gods clearly wanted to make it welcome, providing a scorcher of a day with a balmy summer evening to follow. Ideal for walking around the town, discovering parts you might not have seen before and taking a glass of wine or cordial as you met new faces and just chatted in a relaxed style.

I escorted Tina Hobin and newcomer to the town Richard Allman joined us. The first call was at Peter Blackburn's, where he amused us with the story of just how what was meant to be a modest house grew as he found a way around the planning obstacles and finally convinced the grudging Powers That Be to let him have a cellar. On to Pete and Val Sniadowski's in Tenbury Road, relative newcomers who are very happy to have found this community and its welcoming ways after moving in from Halesowen.

David and Gabrielle Eve's hillside location on Orchard End saw people disappearing from view in the verdant garden as we sipped another glass before hurrying slightly to Rae Luckett's very new house in Rea View. Here was a lesson in how to make a small garden interesting, looking crowded but everyone smiling and admiring the place.

It was another success for the Friends, who raised £510 to help with work on our Parish Church. Heather Kippin was there, walking the Walk with husband Chris and enjoying the work others now put in as she has retired from the committee. But she does keep an eagle eye open for wine bargains through the year, to keep the success coming.

SILLY BITS

My daughter wanted a pet spider for her birthday. The pet shop had some, but they were £70 each! I got one cheaper off the web.



CARDS, GIFTS, HOMEWARE, HARDWARE AND EVERYDAY ESSENTIALS!

Friendly Staff, and a great range of stock with prices to match!

If you need it, and you want it! We've probably got it!

Pop inside before you pop online!

18 High Street, Cleobury Mortimer

Tel: 01299 489590

Email: cleoburrs.onthehighstreet@gmail.com

Like our Facebook page CLEOBURRS

Keep up to date with the latest products!



GW

Tree Stump Removal

Commercial and residential.

Fully insured, qualified and professional.

Your property left neat and tidy.

Happy to give quotes with no obligation.

Ring Sam: 07787095668 or 01299832549

Email: sam@gwstumpremoval.co.uk

Rachel Siddall

DipCFHP, MPSPract

Footcare in the privacy of your own

home:

Nail trimming
Ingrowing toenails
Corn removal
Thickening nails
Callus reduction
Verruca treatment
Diabetic foot care



07478 007913



Hobbs Building Services

EST 25Years.

A Total Plastering, Maintenance and Building Service for your home,
business and outbuildings.

Insurance work undertaken

Emergency call out service for general plumbing, roofing, boarding up damaged doors and
windows. For a free quote please call;

Ian on; 07967190742

Email: hobbsbuildingservice@yahoo.co.uk Or Call/Text Kelly on; 07790085307



**Cleobury Mortimer Benefice
Church services throughout the Benefice in July**

St Mary's Cleobury Mortimer

Sunday 3rd July– 10.00am Family Eucharist
Sunday 10th July – 8.30am and 10.00am Eucharist
Sunday 17th July – 10.00am Eucharist
Sunday 24th July – 10.00am Eucharist
Sunday 31st July – 10.00am Benefice Eucharist

St John the Baptist, Doddington

Sunday 3rd July– 11.00am Eucharist
Sunday 17th July – 3.00pm Evening Prayer

St Michael and All Angels', Hopton Wafers

Sunday 3rd July- 9.30am Eucharist
Sunday 17th July - 9.30am Eucharist

St John the Baptist, Kinlet

Sunday 10th July – 11.15.am Eucharist BCP
Sunday 24th July – 6.00pm Evening Prayer BCP

St George's, Milson

Sunday 3rd July– 6.00pm Evening Prayer
Sunday 17th July –9.00am Eucharist


St Mary's, Neen Savage

Sunday 3rd July – 6pm Evening Prayer BCP
Sunday 17th July – 9.00am Eucharist

All Saints', Neen Sollars

Sunday 3rd July– 11.00am Village Worship
Sunday 10th July– 11.00am Eucharist
Sunday 17th July– 11.00am Village Worship
Sunday 24th July – 11.00am Village Worship

DROP IN AT ST. MARY'S

With St. Mary's Pastoral Care Group, every Thursday: 10.00 am – 11.30am 
Drop in for a free cup of coffee/tea and biscuit with the chance to have a chat and share problems.

UKRAINE: Thinking of hosting refugees?

Are you here from Ukraine and want to meet up with others? Please join us.

Access to support and advice if needed.

The Church Office is open Tuesday and Thursday from 9.00am-3.00pm

Contact details: Grace Johnson cleoburychurch@hotmail.com

Tel: 01299 272916

Cleobury Opticians

NHS & private eye tests ♦ FREE children's glasses

FREE NHS glasses ♦ Home visits



Opening Times-	
Tuesday	9am-1pm 2pm-5pm
Wednesday	9am-1pm 2pm-5pm
Thursday	9am-1pm 2pm-5pm
Friday	10am-2pm
Saturday	9am-1pm

www.cleoburopticians.co.uk

16 Church Street, Cleobury Mortimer, Kidderminster
DY14 8BX

Tel: 01299 270012

Email: cleoburopticians@outlook.com



All Aspects of carpentry work undertaken

Level 3 City & Guilds in Carpentry & Joinery, 20 years of experience

Tel: 07854 032750

Email: duncpearce1@gmail.com

Stewart Mumford Architectural Services Bespoke Architecture

Great value personal service backed up with extensive local knowledge, established links with other construction professionals to ensure comprehensive packages specifically tailored to individual needs.

Initial consultation free of charge.

Specialist in Works to Listed Buildings, Affordable Houses, Open Market Houses, House Extension and Alteration, Barn Conversion and Commercial Projects.



T: 01299 271068

M: 07977 921039

E: office@stewartmumford.co.uk

Simon Morton in the Garden.

Making Time To Garden

For various reasons, I'm currently in the thick of a particularly hectic spell. Work, family and the general act of living are consuming more time than I seem to have available. I'm not complaining; it's just there seems to be more *ebb* than *flow* in my schedule of late, and, well, the timing is a tad unfortunate.

Why? Because this is a distinctly fraught time in the gardening year:

- The seeds you sowed in the greenhouse are now pleading to be planted out
- At the same time, grass growth has gone into overdrive, meaning your lawn resembles the Serengeti
- Oh, and the weeds have decided 2022 is their year - the year where they stake their claim to every bloody bare patch of soil.

I've tried shaking my fist at each of these challenges while howling at the moon, but it doesn't seem to make much difference.

There is, however, one trick I have up my sleeve. Feel free to borrow this 'get out of jail free' card should you ever find yourself in similar time-constrained straits – simple utter the word '**re-wilding**'.

Re-wilding as an approach to horticulture is very much 'on trend' with the garden fashionistas and basically entails letting your garden return to its natural state (weeds, unkempt grass, and a general sense of chaos from what I can make out). As if to prove my point, the top prize winner at this year's Chelsea Flower Show was a garden created around the re-wilding concept (complete with a tumbledown shed and artificial beaver dam - no, really). To my amateur eyes, it was 'nice' without being particularly groundbreaking or beautiful, but it got those 'in the know' very excited. If they took around my garden, especially the borders currently overrun with bindweed, they'd wet themselves.

You can pop the gold medal in the post,

Monty et al.

The paradox of having little to no spare time to spend in the garden is that it's all the more special when you *do* manage to steal a few minutes outside. These are magic moments - the joy of being head down in the border, armed with nothing more than an ancient radio, a snoozing labrador and my trusty (and rusty) trowel are very special. By the same token, sometimes it's simply about giving yourself permission to plonk down in the middle of your (admittedly weed-infested) lawn and just take a breather.

Do nothing.

Listening to the wind move through the trees, watching a bird tear back and forth between the feeder and its nest, or catching a whiff of something lovely - each is a salve to the busy mind. We should all try to take a moment to breathe it all in and enjoy the remarkable sense of calm as it inevitably descends. After a few goes, you realise it's not the **amount** of downtime you manage to squeeze out of your schedule, it's the **quality** of it.

Still not convinced? OK - think about this. A spare thirty minutes can be used in a whole bunch of ways:

- You could watch an episode of a soap
- Squeeze a quick pint in at the pub
- Or, at the risk of oversharing, enjoy a 'special cuddle' with the love of your life (twice?).

All of those options are lovely, but if you're looking for real tranquillity and a sense of well-being, half an hour in the garden at one with the weather, flowers, *and* weeds is tough to beat.

So my advice, especially at this time of year, is to take a moment. Take a breather. And take note of the extraordinary stuff that nature surrounds us with every day. It'll blow your mind (and it's certainly better for your sense of calm than an episode of Eastenders).

Simon Morton

Bespoke framing and mounting for:

- Artwork
- Photographs
- Canvases



The Framing Studio Cleobury Mortimer

Paul Serrell-Cooke
07791 378240

Bringing artwork and images to life



Quality firewood for sale

We source our wood from a reputable and sustainable source.

We advise customers to always buy well in advance of the next winter season. This allows further drying to get the wood to an optimum level.

Can deliver up to 20 mile radius from Bayton (DY14 9NA).

We can do multiple and large loads. Please call to enquire on pricing.

John Edwards 07531025018



H.C.P.C Number CH22527

Cleobury Chiropody Janet Manley

Qualified Chiropodist
MSSCh. MBChA
BSYA (reflex) REIKI Master

Tele:- 01299-272841
Mob:- 07805-268439

Email: janetpmanley@yahoo.co.uk

2, Tenbury Road,
Cleobury Mortimer,
Kidderminster,
Worcs.
DY14 8RB

A Round Of Appaws

Professional Dog Groomer
C&G Levels 2 & 3 Diploma

Fully Insured

Call or text Jules on
07368359144

aroundofappaws1@gmail.com



A. Farr Painting & Decorating

Give your home a beautiful new look....

Contact:

andyfarr12345@gmail.com 07815 855340

Guitar Lessons

With an experienced local tutor
Teaching for 26 years privately and in schools
Exams available. DBS certificate
All ages, styles and abilities welcome
Contact Mark for more information @
MARK.CHECKLEY@sky.com
01746 718636 - 07708 386433

THE BREAKFAST CLUB

The Reverend Joe Simons speaker at our June meeting, did not recount a Damascene moment which led him to faith. It was more of a gradual realisation over years that he had a calling.

He comes from a family of high flyers, professors, head teachers, and it was assumed that he would follow a teaching or academic path. But as the black sheep of the family he trained to become a chartered surveyor and worked for 43 years in the retail sector, with Boots, Morrisons and Sketchley amongst his employers.

His anecdotes were very amusing, particularly those from his time with Sketchley. One of their London branches was pretentiously called 'Jeeves of Belgravia' and was more of a wardrobe than a dry cleaners. Rich customers very often couldn't be bothered to collect their items and at the end of every year Sketchley had to sell unclaimed items at Brixton market, following which locals could be seen sporting Armani suits and Gucci leather jackets bought at a fraction of their

original cost. He also once met the Queen and was literally rendered speechless, he was so overwhelmed.

His life has not been without tragedies and slowly with the gentle help and listening skills of others, the anger and bitterness he felt was channelled to acceptance, a positive outlook and a Christian faith. Too old to go to theological college (!) he felt very fortunate to secure a training place with Ashley Buck here at St Mary's in Cleobury Mortimer.

The club meets on the second Tuesday of the month at the Golf Club. For more information call Angela Drennan on CM 270636.

Diane Waddington

FLICKS IN THE STICKS

On Saturday July 16th, we will be showing *The Conspirator*, a thought-provoking film by Robert Redford which tells the story of the trial of Mary Surrat (Robin Wright), the only woman charged with being a co-conspirator in the assassination of Abraham Lincoln along with seven men.

Surrat owned a boarding

house where John Wilkes-Booth and the other conspirators, including her son John, met to plan killing Lincoln, the vice president and the secretary of state. The nation turns against her and lawyer Frederick Aiken (James McAvooy) reluctantly agrees to defend her. Aiken comes to realize that Mary may be innocent and being used as bait to capture her son, who is still at large.

Robert Hodge

CLOWS TOP VICTORY HALL

The Committee are pleased to announce that the new roof has now been installed, providing a much improved environment. Chairman, Steve Woodison, said: "Now that we have completed the project, we move on to other projects, with a user friendly facility."

A number of events are already booked: on July 15th, Remi Harris return with another music extravaganza. Tickets can be obtained from YardbirdArts@gmail.com.

The Hall is available for hire via the contact details on Facebook or by contacting 07379 959 895 or 07738 014884.

Nigel Caldicott



Home Support Services

All staff enhanced DBS checked with over 20yrs experience and training within the local authority/social services mainstream and dementia care sector. Fully insured.

Are you in need of support with the following basic day to day tasks?

Assistance during the day or night	Completing Forms
Companionship	Pet Care
Shopping/Household tasks	Attending social events/ appointments

Contact Liz
Tel: 01299 271623
Mob: 07826 929222
liz@lifelifeathome.co.uk

Other support services available on request.

www.lifelifeathome.co.uk

Contact Tracey
Tel: 01299 211660
Mob: 07957 659909
tracey@lifelifeathome.co.uk

More Clarion Smalls

GUTTER CLEANING SERVICE

No ladders or scaffolding needed.
Can reach any awkward place.

All residential and commercial

Competitive rates

Call Ian on 07870384096

HIS & HERS

Dog Grooming Parlour

All breeds and
Cross breeds professionally
Trimmed and Groomed



J. A. Guest

Tel: 07790 796 027

PAUL LYNCH PLASTERING SERVICES

Recently relocated. Offering all aspects
of plastering including making and
repairing mouldings, cornices, etc.
Fully insured, references available.

07890 049 592

or

01299 272931

Washing Machine
Repairs and Sales

JULIAN BREAKWELL

Telephone 07791 633 746

Repairs to all makes, including
Bosch, Hoover, Zanussi and
Hotpoint

**NO CALL OUT CHARGE
FIXED LABOUR COST**

Ever After

- Breakfast club
- After school club
- Holiday club
- "Forest schools" outings
- 15hrs education funding
- 24U funding
- Age ranges: 3 months to 11 years



Day Nursery
Cleobury Mortimer

Please contact us on 01299 272 777
Or Call in to see us anytime.

Friendly, Caring Environment for the Community

Hi everyone, don't forget that we
are still collecting soft toys and
teddies to be sent to the less
fortunate.

So drop them off in Market Hall
please.

Many thanks for your help.

Collections4charities.com 07976307889

Piano tutor

Francis Engleheart

*All ages — I specialise in teaching adults
without previous experience*

I come to you

07710 288526 • fengleheart@hotmail.com

S. L. CARTER

**PROFESSIONAL PAINTER AND
DECORATOR**

**PLASTERING, TILING, COVING AND
GLAZING**

CLEOBURY MORTIMER

TEL: 01299 272868

MOBILE: 07815 483 029

I read that Kim Kardashian is now a billionaire based on the fact that she has a big bum. I've got one of those but it has never earned me a penny...

Boris was so unhappy about Passport Office delays that he threatened to 'Privatise the a**e' out of them'. But, not being a 'details' person, he didn't seem to be aware that the areas causing problems, namely the call centre and scanning sections, are already privatised and run by a French company. That being the case, surely he should have been threatening to 'Publicise' etc them. Still, mustn't let the facts get in the way of a good rant...

However, he survived the confidence vote and hailed it as a 'decisive victory'. This will not be welcome news to a group of some 40 disaffected MP's including our own Philip Dunne who met for a discussion in an £8 million Chelsea townhouse and then moved on to a private dining room in a trendy pub where they scoffed £24 cod and asparagus suppers. Not sure what they might have been discussing and it doesn't seem to have worked but clearly they are in touch with the problems facing the average voter.

At the same time as the above vote, the Golborne Link which was to connect HS2 at Wigan to the West coast main line and services to Scotland was quietly scrapped. As HS2 should really only be called HS1.5 after the previous scrapping of the eastern arm, perhaps we are now down to HS1.25. I wonder where it will all end. (not at the West Coast main line obviously...)

'You read it here first' Dept

(1)... Several months ago, you may recall that this column was unhappy about a 'transitioning' person being allowed to enter a female school swimming championship (and win) and suggested setting up a separate class for these individuals. FINA, the world swimming administrators have now announced that those in this situation should not be allowed to compete in women's events

and are looking at a separate competition category...

(2). Some time ago, it was also suggested here that local businesses could 'adopt' a pothole and use it for advertising purposes. Guess what? - In Johannesburg, local companies can now repair potholes and spray their logos on to the restored surface. So far, around 100,000 potholes have been fixed in this way although some claim that this allows the Local Authority to avoid its obligations by outsourcing the work. Does this sound familiar??. As you can see from both of the above examples, where the 'Clarion' leads, the World follows (eventually).

More madness from the Beeb...The victim of a rape by a transgender attacker had agreed to go home with 'him' but changed her mind when she saw he was still in possession of a full set of 'Gentlemans Equipment'. He then proved it was in full working by raping her. In her statement, she referred to him as a 'he' but the BBC diversity team changed all these references to a 'they' to avoid 'misgendering' the attacker. What a shame they didn't show similar consideration to the victim. This incident has caused a storm of protest and the BBC complaints unit is expected to rule on it shortly.

And more extreme wokeism from the good old US of A...'Diversity Activists' in Arizona ended up in a pickle recently after denouncing a disc jockey due to perform at the local school for wearing 'blackface' and accused the school PTA of racism. Their argument was somewhat undermined when it transpired that the person in question was in fact....black. The DJ expressed astonishment at the accusation and said 'Was I not black enough?'. The local school district representative was less amused saying that 'This hateful nonsense has to stop'.

Ariadne J. Grumpy

NEWSPAPER DELIVERIES



Monday- Saturday

Covers Cleobury Mortimer and Clee Hill

Contact Laura Callwood on 07495 708404

or lauracallwood@outlook.com

WILMAS CLEANING & IRONING SERVICES

Experienced cleaner, very trustworthy and reliable. If you would like your ironing done you can drop to my house. I am available weekdays, and weekend's times/days flexible. References are available upon request.



Please contact me for further details on

07891416477
01299 272 941



Number Nineteen

No.19 Denture Repairs

Dental Laboratory

SPEEDY, QUALITY DENTURE REPAIRS

Cracked/broken dentures repaired the same day.

A 1 HOUR service is available for when time is of the essence, just call to make an appointment .

19 Lower Street, Cleobury Mortimer, DY14 8AL

Email: nevilleweaver@googlemail.com

Phone: 07973856733

All work undertaken by a GDC registered technician



A.B. Plastering
Plus Traditional Lime Plastering

Adrian Booton
PLASTERER

4 Severne Green, Bayton
Nr Kidderminster, DY14 9LL

Tel: 01299 832 838
Mobile: 07974 582 524



TOTAL PROPERTY MAINTENANCE

Fireplaces built for multi-fuel burning stoves,
Plastering, Building & General Maintenance

Rob Taylor

Mobile: 07944 074540

Landline: 01299 832734

Email: rptbuilding@hotmail.co.uk

E.PURSLOW & SON LTD

Stone, Gravel, Cement Supplies

Approved Coal Merchant

Calor Gas Stockists

Tarmacadam Specialists

Car Parks and Driveways

Constructed.

TEL: 01299 270314

David Ward
firewood



Do you need a dependable consistent quality supply of seasoned or kiln dried hardwood and softwood firewood?

Cut and split to suit and delivered in breathable 1.2-cubic metre bags, so no need to restack.

Small delivery vehicle, fitted with crane, can deliver to most locations and situations.

CALL DAVID TO DISCUSS YOUR REQUIREMENTS:

Mobile: 07866 441154

Alan Smith Aerials

Digital TV Installations.

Freeview aerials fitted and distributed around the house.

Freesat box, dish, and cable supplied and fitted. One off payment, **No contract or subscription required.**

Extra points, Repairs, New fits, Set ups, Multi room.

All work is carried out by a *Local*, fully qualified and insured installer.

01299 270007 or 07970 675728

THE SOCIAL CALENDAR

Date	Time	Details	Contact	Telephone
Fri 1 st	8.00	Bingo Nights are back! Doddington Village Hall, PAGE 5	Sonia Pearsall	01584 890874
Sat 2 nd	10.00	The Men's Shed officially opens to welcome chaps of all ages.		
Sun 3 rd	10.00	The Parish Walk starts from Milson Parish Church. PAGE 21		
	10.00	The Running Club's 10Km Run. A big event: expect some road closures		
Wed 6 th	7.30	Whist Drive, Doddington Village Hall. PAGE 5	Sonia Pearsall	01584 890874
Thurs 7 th		BLACK RUBBISH BINS EMPTIED TODAY		
	10.00	Rock Pathfinders, Pembroke House, Cross St, Tenbury WR15 8EQ. PAGE 21		
	4.30	The Lacon Childe School Fete – open through till 7. PAGE 51		
Sat 9 th	2.00	Chelmarsh Fete is back, with a real bargain half price entre charge. PAGE 5		
		Jamesons Irish Band play at the Fighting Cocks, Stottesdon. Entry free		
Mon 11 th	6.30	The Creative Writers meet at the Library, Love Lane		
Tues 12 th	07.30	The Breakfast Club meet at the Golf Club. PAGE 43	A. Drennan	01299 270636
Wed 13 th	10.00	Walking For Health step out from the Market Hall. All welcome to join them		
	10.00	CoCo Coffee Morning at the Market Hall. Homemade cake too!		
	7.30	Royal British Legion meet at the Sports & Social Club, Love Lane		
Thurs 14 th		GREEN DOMESTIC RUBBISH BINS EMPTIED TODAY		
	2.30	Rhyme Time for Under 5s at the Library, Love Lane. Free to attend. PAGE 7		
	7.30	Fun Quiz Night at the Fighting Cocks, Stottesdon. Teams of 4, £5 entry		
	8.00	Remi Harris has a Freddie King Night at The Falcon Hotel, Bromyard. PAGE 13		
Fri 15 th		Remi Harris plays Freddie King at Clows Top Victory Hall. PAGE 13		
15-17 th		The Festival at the Edge at Hopton Court, Hopton Wafers. PAGE 31		
		"Letters through Time" featuring Farlow Primary School at Festival at the Edge		
Sat 16 th	09.30	Cleobury Country Farmers Market, in and around St Mary's Church		
	09.30	Craft & Food Market in the Market Hall		
		Neen Sollars Fete at Tetsill. No start time advised! Lovey country event. PAGE 17		
	7.30	Flicks in the Sticks features "The Conspirator" PAGE 43		
Tues 19 th	7.00	Prostate Cancer Support Group meet at Kidderminster Town Hall. PAGE 51		
Wed 20 th	7.30	Whist Drive, Doddington Village Hall	Sonia Pearsall	01584 890874
Thurs 21 st		BLACK DOMESTIC RUBBISH BINS EMPTIED TODAY		
	10.00	Rock Pathfinders, Gateway Car Park, Hanbury Road, Droitwich, WR9 7DU PAGE 21		
Fri 22 nd	8.00	Bingo Night, Doddington Village Hall, PAGE 5	Sonia Pearsall	01584 890874
Mon 25 th	7.30	The nearly Dead Poets Society gather at the Library		
Wed 27 th	10.00	Walking for Health are out again, starting from the Market Hall		
	10.00	CoCo Coffee Morning at the Market Hall		

Date	Time	Details	Contact	Telephone
Wed 27 th	6.00	Late opening of the Food Bank, Market Hall. Till 7pm		
Thurs 28 th		GREEN DOMESTIC RUBBISH BINS EMPTIED TODAY		
	7.30	Bingo at the Fighting Cocks, Stottesdon. Basket meals available		
27-30 th		Reza's renowned "Art" performed at Ludlow Assembly Rooms. PAGE 27		
Fri 29 th	8.00	Bingo Night, Doddington Village Hall. PAGE 5	Sonia Pearsall	01584 890874
		AND LOOKING AHEAD TO AUGUST.....		
Wed 3 rd	7.30	Whist Drive, Doddington Village Hall	Sonia Pearsall	01584 890874
Thurs 4 th		BLACK DOMESTIC RUBBISH BINS EMPTIED TODAY		
		"The Burwarton Show" the biggest one-day agricultural show in the country. Huge!		
Sat/Sun 13/14	10.00	Far Forest Country Show – always one to look forward to. PAGE 7		
		AND A REMINDER ABOUT THESE REGULAR EVENTS:		
	8.00	Every Monday except Bank Holidays, Bingo in the Market Hall		
Thurs	7.00	Lessons in the Birth Dance for expectant mums, in the Market Hall		
Thurs	10.00	Drop in at St Mary's church to chat and maybe share a trouble.		

Lower St Garage

7 Lower St, Cleobury Mortimer. DY14 8AA



- M.O.Ts on cars, motor bikes & small commercial vehicles
- Tyres, Tyre fitting,
- Puncture repair and Tracking.
- Diagnostics, Air conditioning
- Welding.
- Service and Repairs to most vehicles.
- Delivery and Collection Service Available

Contact The Team at Lower St Garage on: 01299 270208



Stove Installations, Service and Repair

- All solid fuel wood burners and boilers supplied and installed
- Chimneys relined and twin wall systems built
- Chimney Pots, Cows, Carbon Monoxide alarms and Air Bricks fitted
- All Stoves and Fires serviced including chimney sweep
- Hetas Landlord Safety Certificates

Tel: 01299 272712 Mbl: 07807 343006
email: info@rweaversservices.co.uk



twshq

Family run business of 30 years, call us for a free no obligation quote

Finance available, buy now and pay later

5 Lupin Works, Worcester Road, Kidderminster DY10 1JR
Phone: 01562 822855 – Email: sales@twshq.com

Tele:- 01299-272757 *Hands on Printing* **Email:- clickclick2@hotmail.co.uk**
Mobile 07708 587787

All digital media printed to 6"x4" 5"x7" 8x6" 10"x8"
CANVAS WRAPS FROM 12"X16" - 30"X 20"
ENLARGEMENTS FROM 12X10" TO 24X36"
 FROM PHOTO'S, DIGITAL MEDIA & 35mm SLIDES

PASSPORT PHOTO'S ONLY £5-00
WHILE YOU WAIT

MOST VIDEO FORMATS TRANSFERRED TO D.V.D.
 USB or SD cards

INCLUDING VHS - VHSC - SONY 8 - DIGITAL 8 - Hi8 - MINI DV & BETAMAX
 REEL TO REEL & CASSETTE
AUDIO TAPES & OLD LPs TO CD

PHOTO & VIDEO FILES TRANSFERRED FROM MOBILES TO DVD ETC.

Video Filming Service

43, High St.
 Cleobury Mortimer.
 DY14 8DQ

STANDARD 8 - SUPER 8 FILMS TRANSFERRED TO D.V.D.
 USB or SD cards
DAMAGED PHOTOGRAPHS RESTORED ETC.

BIRTHDAY AND CELEBRATION BANNERS

Look Who's 50 Today!

VINYL BANNERS - BUSINESS CARDS - SHORT RUN FLYERS INVITATIONS - ORDERS OF SERVICE

B-W OR COLOUR PHOTOCOPIES
SELECTION OF PHOTO FRAMES
 Traditional Studio Portraits and Pet Photo's

 **LACON CHILDE SCHOOL** 
 the future begins here
 Headteacher: Darren Reynolds

1735



Lacon Childe School, Love Lane, Cleobury Mortimer, DY14 8PE Tel. 01299 270312 email - admin@lacon-childe.org.uk


LUDLOW SALVAGE
 ~ Est 2017 ~
 Reclaimed Building Materials and Architectural Antiques

Station yard, Station road,
 Woofferton, Ludlow SY8 4AW

T 07805 312168
@ ludlowsalvage@gmail.com
f /ludlowsalvage
ig /ludlowsalvage

WWW.LUDLOWSALVAGE.CO.UK

BoomeranG
 of Cleobury Mortimer
 private hire travel

- Friendly, reliable service
- Local & long distances
- Fully council licensed (up to 12 passengers)
- Airport transfers
- Courier service
- All occasions catered for

Tel: 01299 271257, Mob: 07411 142755, Email: stuart.boomerang@yahoo.co.uk

Cleobury Mortimer Golf Club

At Cleobury Mortimer Golf Club we believe that a really enjoyable golf day takes more than just a great golf course. We make sure that your whole experience, from the friendly welcome in the golf shop to your drinks and meal in our relaxed clubhouse, is all part of a day you'll remember.



Everyone Welcome

Membership available.

Just some of the many benefits of joining Cleobury Mortimer Golf Club

- Access to full length 27- hole golf course
- Opportunity to achieve and maintain a handicap
- Family, Friendly Environment
- Playing opportunities at all times of the week
- A range of competitive opportunities
- Open dawn to dusk 363 days a year.

We look forward to meeting you at Shropshire's friendliest golf club.



- 📞 01299 271 112 (ext 1)
- ✉️ pro@cleoburygolfclub.com
- 🌐 www.cleoburygolfclub.com

PROSTATE CANCER

Just a reminder that we have a very active Support Group for men suffering this, the most common cause of cancer deaths in the Over 50s. The most important point to remember is that if you get treatment early, it can be cured by a range of treatments.

The Group have a meeting at Kidderminster Town Hall on Tuesday the 19th of this month. The doors open at 7.00 and if you have concerns or just want to know more, you'll be welcome. Dr Stephen Allen will be speaking about the 'Current Treatment Pathway.'

This is a very helpful and understanding group and great to know if you have any problem or doubts.

SEVERN HOSPICE

CRAFT GROUP

The Craft Group of the Severn Hospice Support Group have a stand at the Burwarton Show, selling their crafts. Please call in and take a look at the wonderful things they are producing. 4th August is the date for your diary.

Rosemary Abbiss

LACON CHILDE FETE

A brand new event, Lacon Childe School are holding a fete on Thursday the 7th of this month. It starts at 4.30 and will run on until 7.00, so an ideal family event.

Expect lots of carnival fun and games, a dog show, craft stalls and live entertainment. Games are 50p a go, there will be loads of prizes to be won and admission is free.

DODDINGTON

Thank you to everyone (all 150-200!) who visited, or contributed to, our exhibition. We were delighted by how many people visited and the positive feedback received. There is clearly an appetite for local history to be available and we are keen to play our part in that. In the short term, we are sorting through the exhibits and will create Doddington Scrapbook Number 5 to add to the four created by Eric Russell; all of these will be on display at our future events, or by request. We are also excited that we've been granted £10,000 by The National Lottery Heritage Fund to develop a heritage and restoration project at St John's. This is made possible thanks to National Lottery players, and we hope it will lead to us having local history and other information available all the time in St John's. Meanwhile, two of our windows are to be repaired starting in July, thanks to grants from Ironmongers' Company, Rowlands Trust and Shropshire Historic Churches Trust - it is great to know that all these grant bodies believe in the importance of repairing St John's and making it fit for visitors and worshippers alike. The church is open every day from 10am - 5pm and even without the exhibition it is worth a visit - please do drop in. Meanwhile, we'll be serving Afternoon Teas at the Village Hall on 20th August

from 2.30pm. For up to date news follow us on Facebook: @StJohnsDoddington, or check our website: www.achurchnearyou.com/church/10505/ Email: stjohnsdoddington@gmail.com
m Celia Gibb 01584 318036

THE READING GROUP

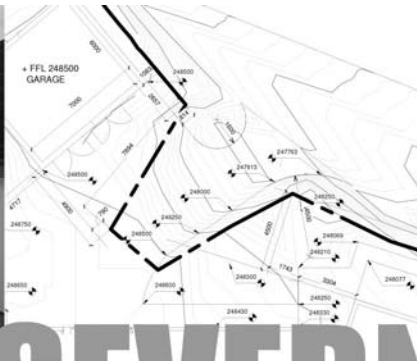
A modest gathering of seven readers in June reached unusual unanimous harmony in praise of Elizabeth Speller's 'The Return of Captain John Emmett'. The story of a man back from the horror of battle and more in World War One, whose apparent suicide puzzles his old comrade and sparks a private investigation. It would be wrong to reveal the outcome here and possibly spoil the opportunity for Clarion readers to pick up the book and puzzle for themselves. Unanimous praise is a high recommendation.

Our July read is Brit Bennett's 'The Vanishing Half' that tells the story of twin sisters who leave home, split off to each go their own way and meet again years later. We will share views on the story when we meet in the library at 7.30 on Monday the 18th
Jim Reynolds

SILLY BIT

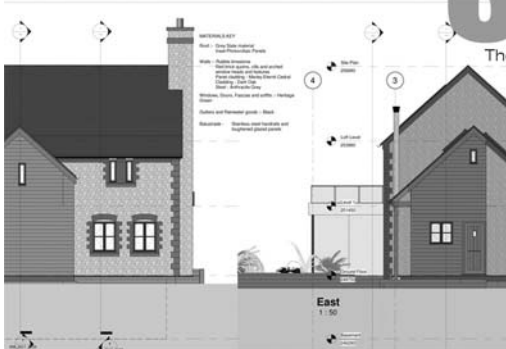
A teddy bear working on a building site finds his pick has been stolen, so he goes to the foreman and complains.

The foreman says: "Oh sorry, I forgot to tell you, today's the day the teddy bears have their pick nicked."

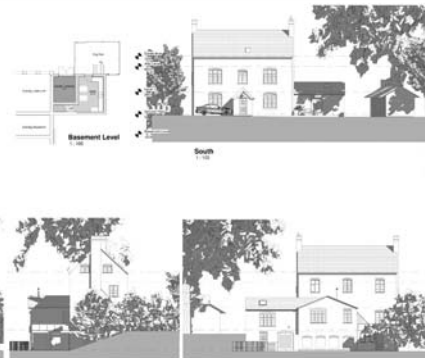
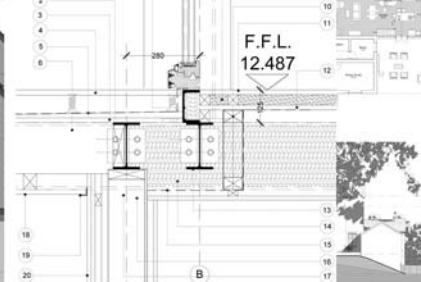


SEVERN

architects



The Guard House, Cleobury Mortimer, DY14 9BD



We are a friendly Shropshire based architectural practice with plenty of experience in all kinds of residential projects large and small. Using the latest 3D software package and technology we can turn your virtual dream home into a reality.

Contact us now on 07825 759484 or email julie@severnarchitects.co.uk for your consultation

Our Architectural Design Services include

- Design & Feasibility Studies
- General project Advice
- 3D Modelling
- 2D CAD Drawing
- Planning Advice and Submissions
- Building Regulation Applications
- Tender & Construction Drawings
- Contract & Project Management

RIBA 

Chartered Practice

KIDDERMINSTER

SELF STORAGE AND REMOVALS

STORAGE

Free insurance . Flexible Terms
Fixed Price Guarantee . No hidden costs

REMOVALS

Professional Removal Service
Est. over 25 years

PACKAGING MATERIALS

Boxes, Bubblewrap, Tape Etc. for sale
Free local deliveries on orders over £20

01562 744088

www.kidderminsterselfstorage.co.uk

Unit 11 Finepoint Way, Stourport Road, Kidderminster DY11 7FB
info@kidderminsterselfstorage.co.uk





CLEOBURY COMMUNITY HUB

Coffee Shop, Climb61, Youth Events

Mondays - 9:30am - 8pm

Tuesdays - 9:30am - 9pm

Fridays - 9:30am - 5:30pm

The CCH continues to be the Hub of the community it was intended for, as we have had more young people through the door for both 'Hub Youth' and climbing at Climb61. It has also seen a growth in our regular coffee shop attendance and Ladies Night @ Climb61. We continue to offer a place for all people within the community and there are a growing number of groups using the coffee shop space as well as a small number of ad hoc birthday parties for both Climb61 and the soft play area.

FOCUS ON: Families

What a privilege it is to show hospitality to those in need and this has never been highlighted nationally (in our lifetime) as it has been since the 24th February. The Cleobury community has been incredible in opening homes and businesses to Ukrainian families and we at the CCH want to continue that hospitality. Mondays 12-3pm and the last Tuesday of the month from 5:30-7:30pm there is an opportunity for Ukrainian families to meet up and have a coffee, chat and even a climb. Please spread the word. The first Tuesday evening is Tuesday 26th July.

Let's continue to be hospitable to all who come to make this area their home and also to those passing through.

Don't forget our regular activities:

Mondays - Coffee Shop, Rock Tots, Soft Play, Kids Climbing Club, Youth Climbing Club, Climb61 Bouldering.

Tuesdays - Coffee Shop, Climb61 Bouldering, Soft Play

Wednesdays - Hub Youth - Wed 11th first one of May (alternate weeks)

Thursdays - Hub Youth - Thurs 5th first one of May (alternate weeks) Ladies Night (9th June)

Fridays - Coffee Shop, Climb61 Bouldering, Soft Play

Climb61 June Session Times - To book: www.smypp.org.uk

Mondays 1:15pm-2:45pm

Tuesdays - 9:30am-11am, 11:15am-12:45pm, 2:15pm-3:45pm, 4pm-5:30pm,
5:45pm-7:15pm, 7:30pm-9pm

Fridays - 9:30am-11am, 11:15am-12:45pm, 2:15pm-3:45pm, 4pm-5:30pm



@cleoburycommunityhub

@saintmarysyoungproject @cleoburycommunityhub

ONE STOP ROOFING

The Flat Roof Specialists



- Rubber, Fibreglass & Felt
- Re-pointing & Chimney Repairs
- Fascias & Guttering



Take advantage of our offer: Replace your flat roof Making EPDM (rubber) your choice for a long lasting, weatherproof & high slip resistant membrane, with a lifespan of 50 years, **get it for the same price as felt**, which only carries a 10 year guarantee!

Replace your flat roof with EPDM (rubber) & add a skylight or lantern, giving extra light to your room starting **from as little as £400!!**

Freephone 0800 0855277 * 07538 471274

www.onestop-roofing.co.uk

onestoproofinguk@gmail.com

Family business est. 35 years.
All repair work undertaken

Proud members of
Checkatrade.com
Where reputation matters

CLEOBURY SEAFOOD & FREEZER CENTRE

6 Newhouse Farm - Tenbury Road - Cleobury Mortimer

01299 271345

Ready Meals

*We stock a wide range of ready meals, from the ordinary to the extra ordinary !
Plus a range of Vegetarian, Gluten Free and Vegan meals.*

Mr Dave's

*Meat, Chicken, Prawn and Vegetarian Balti, Madras Curry
Mr Dave's extra large naan, plain and garlic & coriander.*

Fish

*Cod, Haddock, Plaice fillets, Sea bass, Lemon sole, Cod Loins, Smoked Haddock.
Battered & breaded fish fillets. Young's Jumbo Cod Fish Fingers.(Very Popular)*

Seafood

*Raw king Prawns, Squid, , whitebait, cooked tiger prawns, scallops, seafood cocktail.
Hot & Spicy Prawns, Breaded Cod & Plaice Goujons*

*New Fish Cakes Thai Style Cod & Prawn, Smoked Haddock, Mozzarella & Spring Onion,
Sea Bass, Cod, Lime & Ginger.*

Fruit and Vegetables

Potato Products

Bannister Jacket Potatoes, Oven chips, Sweet Potato Fries Twister Fries, Hash Browns, Spicy Wedges

Chicken Products

Southern Fried Breaded Chicken Steaks, Breaded Chicken Goujons, Chicken Nuggets, Chicken Bites.

Gateaux for all occasions

BENNETTS ICE CREAM

Opening Times 9am to 4.30pm Mon to Friday. Saturday 9am to 12

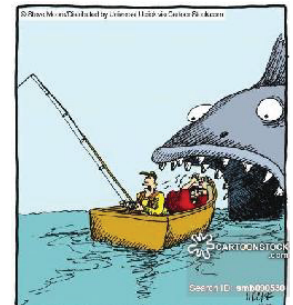
Visit our web site www.cleoburyfreezercentre.co.uk

Cleobury Clarion July 2022

Page 54



"We tried artificial flies. We tried lures. We tried live bait. Nothing works ... it's like they're psychic!"



"Blood-curdling screams. Hayes, will do nothing to help us catch a fish."

Clarion Clippings - The Local News



A M Plumbing & Heating

- *General plumbing
- *Oftec approved
- *Bathrooms
- *Oil boilers
- *Hot water cylinders
- *Servicing
- *Central heating
- *Power flushing

Call Today: 07565 181554

BOOK YOUR
MOT WITH US



**LEWIS
MOTORS
KINLET**

☎ 01299 841 391



SERVICING & REPAIRS TO ALL MAKES & MODELS

- Clutches & Cambelts
- Exhausters, Batteries & Tyres
- Wheel Alignment
- Diagnostics
- Recovery
- Welding

f Follow us on Facebook: LewisMotorsKinlet

KINLET C OF E PRIMARY SCHOOL

Love to Learn – Learn to Love



- Outdoor play areas
- Small family atmosphere

- Kind – Inspire – Nurturing – Learning – Eco-friendly -Teamwork

www.kinlet.shropshire.sch.uk

admin@kinlet.shropshire.sch.uk

Telephone: 01299 841210

Booton Brothers



Construction

Rich: 07445298747

Mike: 07853225401

bootonbrothers@outlook.com

All building work undertaken

Elite Sweeps

Professional Chimney Sweep

& HETAS Stove Installer

- ✓ Prompt, reliable & friendly service.
- ✓ Cowls and Chimney Pots fitted.
- ✓ Fully qualified and fully insured.
- ✓ Guild certificates issued after every sweep.
- ✓ HETAS Approved Installer.



Call Eddie Tel. 01299 382222 / 07895 612915

www.elitesweeps.co.uk



I.P.T. GROUND SOLUTIONS

Over 30 years experience

For all pipe installations:

• Sewage • Storm drainage

• Blockage/Repairs • Ditches

• Grass Cutting / Hedge Trimming

• Driveways • Ground clearance

For all your ground needs

Contact Ian on:

T: 07870 384 096

E: ian.ptaylor@yahoo.com

W: iptgroundsolutions.co.uk

Now we are in July and summer, we could be forgiven for remembering a song written by Ray Dorset the lead singer of Mungo Jerry, celebrating the carefree days of summer nearly 50 years ago! Sadly carefree is not a universal term we can use these days, when for many reasons we have to have a heightened awareness of the many unscrupulous scammers that find increasing ways of trying to defraud us. While these articles are labelled, "Beat the Scammers" one has to admit that beating them is better described as keeping them at bay. Nearly every week, this writer has at least half a dozen examples of a mixture of email, telephone or internet related scams. It's very encouraging to see social media picking up on this and for those of you who can access emails or the likes of Facebook, Twitter, Next Door and other interactive sites, we are seeing a build up of examples and warnings from our friends, families and neighbours. These are not to be ignored and as I have stressed in the past, the level of sophistication of some of these scams is so high, it is hard to differentiate between what appears to be a genuine message from a respected source and the start of a scam. The best test is to follow the guidance that says, If you get a call, email or text etc that you are not expecting, then STOP, CHECK, CONFIRM before responding to any request. Genuine organisations whether it's a Government agency such as DVLA, DHS, HMRC will never ask you for personal details, which may lead you to disclosing your bank details. Genuine Financial organisations such as Banks, Building Societies will usually include something like your post code in the message that would indicate that they already have business with you. HOWEVER, always test the message by looking at what we call the 'header' of a message. Eg, it may look like the sender is Lloyds Bank and your name or

email is in the To: line. But test it by clicking on the 'header' which opens it up and shows the real name of the sender. LLOYDS BANK may open as jenny542@gmail.com or something that does not look remotely like the real organisation. As always the rule of thumb is never reply or click on anything in the main body of the email as it could take you directly to a scam. The same goes for telephone calls from a number you don't recognise, be very careful how you answer these. It may sound rude, but I usually pick up the call and say nothing, not even Hello. In many cases the caller will also say nothing and then disconnect. This is a good sign that you just avoided a scam. If you have a mobile or home telephone, it's good practice to create a list of genuine contacts with their name related to a phone number that you know is genuine. This includes your Bank, Building Society etc. Scammers can create fake phone numbers but not genuine ones. Finally there is a lot of incoming email activity warning the recipient that their AntiVirus program needs to be renewed. Usually it refers generically to just 'Your Anti virus' but sometimes refers to Norton AntiVirus which many users install. If you get such a message, check your computer to see if your subscription has really expired or get someone you trust to do it for you. Chances are it is still valid and you have just saved yourself from disclosing credit or debit card details to a scammer.

There are many genuine sites that provide advice on a weekly or even daily basis about all these crimes and more. I would highly recommend that you sign up and stay up to date. You will be STAYING AWARE & SAFE & PROTECTING yourself. A good starting point is <https://www.takefive-stopfraud.org.uk>. Enjoy the Summer.

Nigel



EVERYTHING INTERIOR UPHOLSTERY

REUPHOLSTERY SERVICES:

- AUTOMOTIVE
- CARAVANS
- CAMPER VANS
- TRADITIONAL & MODERN
- COMMERCIAL & BESPOKE
- DOMESTIC
- CARPET & UPHOLSTERY CLEANING
(in partnership with WE GLEAM)

OVER 30 YEARS EXPERIENCE



CONTACT US TODAY

Unit 19 Old Station Business Park, Cleobury Mortimer, DY14 8SY

07961 712683 / 07961 792103

www.everythinginterior.co.uk

email: everythinginterior@outlook.com



Professional Family Estate Planners



- Wills or Lasting Powers of Attorney from £95
- Free Will reviews
- Probate support
- Care home fee avoidance
- Free funeral plan with every Will
- Family Protection Trusts

"A lifetime's attention to complex legal issues as a retired Detective Superintendent and now a Private Client Lawyer means **you can definitely trust Mark and his daughter Lauren** to write your Will"

T: 01299 251442
E: info@ambalegalservices.co.uk
W: ambalegalservices.co.uk



- Appointments by telephone, video link or in the comfort of your own home
- Over 45 years' experience in law
- Friendly and professional support for you and your family
- Call us up to see how we can help!



ARE YOU LOOKING FOR Independent Financial Advice?

Consequential Planning are your local independent financial advisers. We have a highly qualified team with extensive experience in all aspects of financial planning. We can offer help and advice on investments, pensions, protection and mortgages.

Telephone 01299 407128
 to arrange a free financial review or visit:
www.cnsq.co.uk





Burning Blocks

www.burningblocks.co.uk



A safe and easy to use alternative for logs for both wood stoves and open fires

Discount for local delivery quote: "family10" at the checkout

- Easy to light / roaring fire in under 5 mins
- Easy to stack / 10kg packs
- High heat / similar to coal on output
- Each briquette lasts over an hour
- Low moisture / 8% moisture maximum
- Store undercover

UK wide delivery available, approx. 2 days

buy online at www.burningblocks.co.uk

For more information:-

Email: burningblocks@gmail.com Website: www.burningblocks.co.uk FB: <https://www.facebook.com/burningblocksbriquettes>



Richard Haines

The Worcestershire Chimney Sweep

- ◆ Traditional & Power Sweeping Services
- ◆ Certified Chimney Sweep
- ◆ Insurance Recognised certificate issued



M: 07752 116629 T: 01584 781358 E: lostcity5@hotmail.co.uk

www.theworcestershirechimneysweep.co.uk




LUDLOW FIREWOOD

~ Est 2019 ~

Suppliers of Premium Grade Ready to Burn Firewood, Beautifully Crated and Delivered to Your Door



T 07949 318014

@ ludlowfirewood@gmail.com

IG /ludlowfirewood

F /ludlowfirewood

Station yard, Station road, Woofferton, Ludlow SY8 4AW

WWW.LUDLOWFIREWOOD.COM

Available in Barrow bags and nets for all your access requirements.



Jubilee and Festival

This year we were pleased to support Cleobury Festival which coincided with the Queen's Platinum Jubilee events.

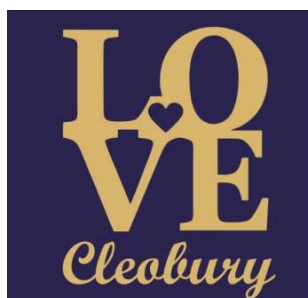
We would like to thank everyone involved with our Jubilee Beacon which proudly stands on the Playing Field, especially to Greg Dare for designing and crafting the main beacon from horseshoes; Brett Webster for fabricating the steel post; David, Trevor and Adrian from Mawley Town Farm for fixing the beacon in the concrete base installed by Andrew Price, all organised by Councillor Paul French who brought the whole project together for a very well-attended Beacon lighting ceremony on Thursday 2nd June.

Thank you to everyone involved in putting on the Cleobury Festival on Saturday 4th June. There was a wonderful variety of stalls, exhibits, activities and entertainment on the Playing Field and in Lacon Childe School with a good representation by our local community groups and local traders. We were pleased to have Circus Skills and the Slackline School, Cleobury Concert Brass, our local policing team, fire service, community first responders and youth groups as well as a variety of art and craft displays with a selection of food and drinks available. We are grateful to Lacon Childe School for use of the Hall for stall holders and exhibits and the Music Room for storytelling performances and to the Sports and Social Club for their support and use of facilities.

The final Jubilee event was the delicious Afternoon Tea Party on Sunday 5th June at Lacon Childe School with grateful thanks to Festival Volunteers Group.

We would love to hear of any feedback you have so that we can make the Festival even better next year. We are always looking for volunteers for our Community Led events so please contact the Town Council office on 01299 271154 or email cleobury.council@gmail.com if you are interested in being involved in either the planning or just helping on the event days.

Love Cleobury



We are pleased to support the 'Love Cleobury' initiative. Throughout 2022 and into 2023 we will be inviting you all to contribute to the 'Love Cleobury' initiative developed in conjunction with St. Mary's Church which is asking this community to support and care for ALL who live here. Look out for the logo as this initiative develops.



EnergyZone

Integrated Renewable Solutions

SHROPSHIRE HEAT PUMPS

EnergyZone are one of Cleobury's best kept secrets. We are one of the largest and longest established renewable engineering companies in the UK installing heat pumps since 2003. 14 in house engineers with over 130 years combined experience completing over 1000 Domestic and Commercial systems all over the UK. Based next to Hobsons Brewery in Cleobury Mortimer we are your local experts in heat pump systems.

Heat pumps are rapidly becoming the standard heating system for all new build properties, as they always have been in many parts of Europe, and the Government is offering a very generous incentive to encourage anybody with an Oil, LPG or Electric boiler to replace this with a heat pump.

Replacing your boiler with a heat pump has many advantages;

- Lower running costs for your heating - up to 50% lower
- No dependence on fuel deliveries
- Removal of current boiler under our scrappage scheme
- Up to a 10-year warranty with a 20 to 25-year life expectancy
- Government backed Renewable Heat Incentive (RHI) to help cover installation cost over 7-years (available until March 2022)

What can EnergyZone offer?

Complete design and installation of a heat pump system, including all paperwork required to enable you to claim the maximum Government incentive

Upgrade of your old radiators and hot water cylinder if required

Local support with annual servicing through our EZcare package

With the current Government incentive now is a great time to consider scrapping your old fossil fuel boiler and installing a heat pump that is not only good for the planet but also your pocket.

Call us for a free home assessment from one of our engineers.



Fully accredited installers of the brands above ensuring the correct model is selected for your home

01299 270011

www.energyzone.co.uk sales@energyzone.co.uk



Community Contacts for Clarion Readers

CEMETERY ADMINISTRATOR	Theresa Ray	07703 965 064	theresa.25016@hotmail.co.uk
CLEOBURY COUNTRY CENTRE		01299 272300	In Love Lane, 9 to 5 Mon to Fri.
CLEOBURY DENTAL PRACTICE		01299 271747	www.cleoburydental.co.uk
CLEOBURY CARERS	Michelle	01743 341995	carerssupport@shropshire.gov.uk
CLEOBURY COMPASSIONATE COMMUNITIES	Katja Jones	07966 080111	Tuesday and Thursday at the Medical Centre
CLEOBURY MORTIMER LIBRARY		01299 272301	Open 9 to 7 Mon, 9 to 5 Tues/Fri and 10 to 1 Sat.
LOCAL POLICE	PC Wayne Strangwood	07773 054 587	wayne.strangwood@westmercia.pnn.police.uk
CLEOBURY MORTIMER GUIDES	Fiona McCallum	07805 737 555	
CLEOBURY MORTIMER SCOUTS	Lowri Hughes		cleoburybeavers@gmail.com
CRIMESTOPPERS		0800 555 111	Free Police contact. Talk in confidence, to report any crime.
DOMESTIC VIOLENCE HELPLINE		0800 783 1359	Women's Aid, 24 Hour support:
HOME FROM HOSPITAL		01584 878046	Help over the first weeks back home from Age UK
MARKET HALL	Kim	01299 272732	markethall@cleobury.org.uk
MEDICAL CENTRE		01299 270209	Out of surgery hours, use the Shrop Doc Service.
SHROP DOC		111	Service available evenings and weekends
THE MEN'S SHED	Pete Blackburn	07776 243 584	petblack@me.com
THE PHARMACY		01299 270219	Closes for half day on Saturday. Delivers prescriptions
ST ELIZABETH'S CATHOLIC CHURCH	Angela Flowers	01299 270318	Sunday Mass at 9.00am
NIGHTINGALE NURSING FUND	Rosemary Abbiss	01746 718451	
TOWN COUNCIL	Clerk Matthew Sheehan	01299 271154	Cleobury Country Centre 9 to 2 pm, Mon to Fri. www.cleobury.org.uk . Council meets in the Centre on the first Monday of the month
POST OFFICE		01299 270211	In the Select and Save Grocery Store, Church Street
SAINT MARY'S YOUTH PROJECT	Mark Greaves	07828 116810	mark.stmarys@live.co.uk
SHROPSHIRE COUNCIL		0345 678 9000	
SOUTH SHROPSHIRE YOUTH FORUM		01584 874922	
VOLUNTARY CAR SCHEME		01299 666119	Mandy Smith
WASTE DISPOSAL		0345 678 9007	The contractor is Veolia
WATER SUPPLY EMERGENCIES	Severn Trent	0800 783 4444	
NEWLIFE CHURCH	Pastor E Stirrup	01562 630595	Sunday services at 10.30

Collect the Clarion in Cleobury from: Select and Save Grocery, Londis Store, Cleoburrs, Cleobury Cafe, The Severn Hospice Shop, Mid Counties Co-op, Purslows, and The Library.

Out in Cleobury Country at: Heath Farm Meats, **Bagginswood**; **Clee Hill Stores**; **Clows Top Stores**; The Sun and Slipper, **Mamble**; **Hopton Bank Service Station**; ; **Ludlow Library**; **Mahorall Cider Farm**; The Colliers Cafe & Shop, **Rock**; The Fighting Cocks, **Stottesdon**; The Duck Inn, **Chorley**; The Live and Let Live, **Neen Sollars**; The Eagle and Serpent, **Kinlet**; Parker Motors, **Ditton Priors**.

Copies are also available from the Parish Churches in: Cleobury Mortimer, Bayton, Doddington, Hopton Wafers, Milson, Neen Savage and Neen Sollars.

Missed your Clarion? Cleobury Mortimer Library keeps the current month's copy on file and all back issues are available to read as pdfs from www.cleoburyclarion.co.uk.

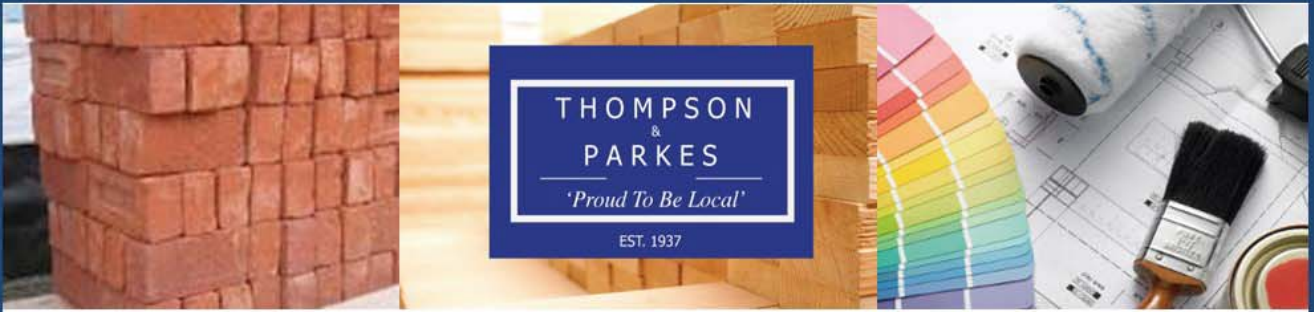
DEADLINE FOR THE AUGUST ISSUE: JULY 22nd. CONTRIBUTORS PLEASE NOTE THAT THIS IS THE LAST POSSIBLE DATE TO RECEIVE REPORTS.

Editor and Advertising Sales: Jim Reynolds, 4 Childe Road, Cleobury Mortimer, Shropshire DY14 8PA. Telephone: 01299 270642 Mobile: 07410 977 212

E-Mail: editor@cleoburyclarion.co.uk or uncle.jim@icloud.com

The Clarion On The Web: www.cleoburyclarion.co.uk

Printed by Badger Print and Design of Shifnal, 01952 730511



Your local specialist supplier of
Insulation, Timber, Plywood and all Building Materials

THOMPSON & PARKES

SANDSTONE - Best offer locally!

A natural product, Stoneplus Raj Indian sandstone has subtle tones and ideal for traditional patios.

15.25m² patio packs including 900 x 600, 600 x 600, 600 x 300 and 300 x 300 slabs

Just £24.50/m² - £373.63 +VAT per pack

While stocks last and available at all outlets!



Proud to be Local

www.thompsonandparkes.co.uk

Stocking and Delivering all Your Building and DIY Materials

Kidderminster 01562 745881
Oldington Trading Estate DY11 7QP

Oreton 01746 718414
Cleobury Mortimer DY14 0TH

Stourport 01299 534545
Minster Road DY13 8AB